

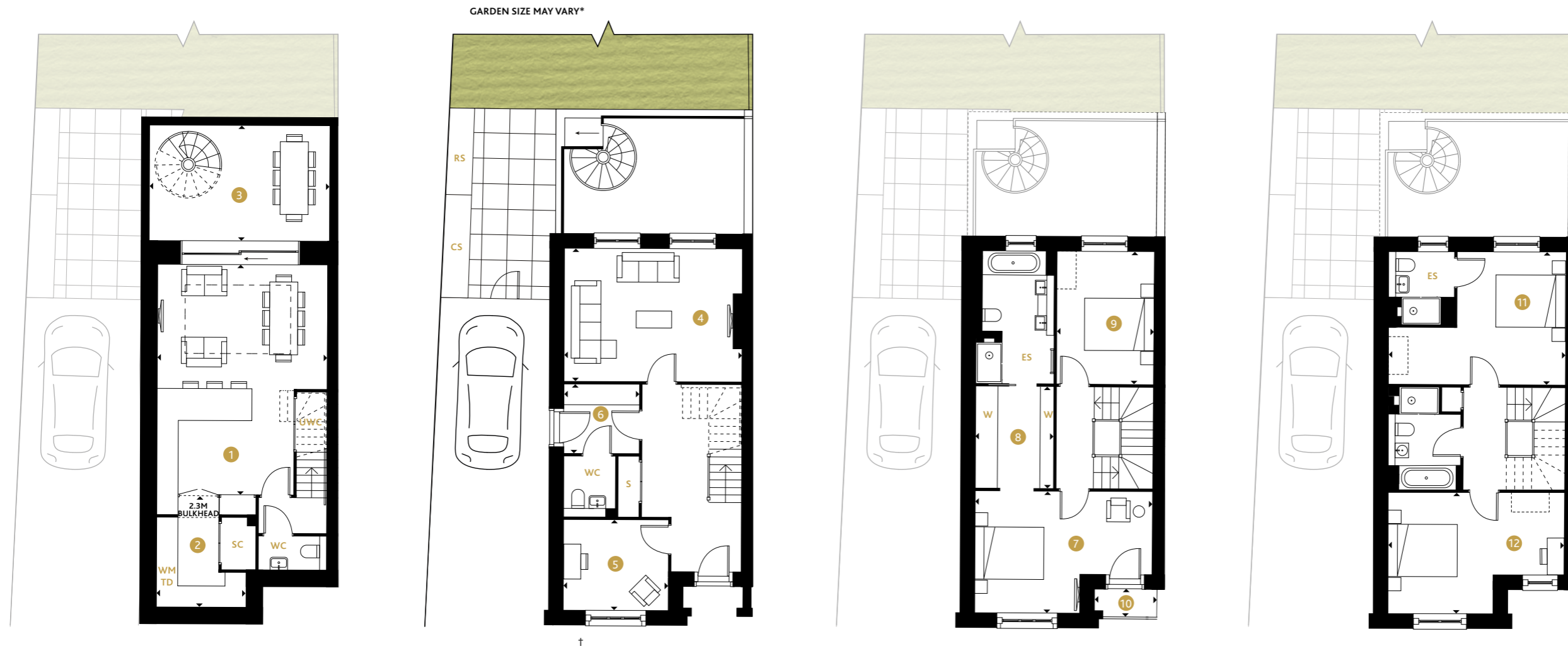
# Greenside Villas

PLOT 235



EARLSFIELD

SW17



## LOWER GROUND

- 1 KITCHEN/LIVING/DINING  
7.10M X 5.09M | 23'4" X 16'8"
- 2 UTILITY/PANTRY  
3.28M X 2.66M | 10'9" X 8'9"
- 3 TERRACE  
5.42M X 3.46M | 17'10" X 11'4"

## GROUND FLOOR

- 4 LIVING ROOM  
5.33M X 3.95M | 17'6" X 13'0"
- 5 STUDY  
3.15M X 2.68M | 10'4" X 8'10"
- 6 BOOT ROOM  
2.25M X 2.06M | 7'4" X 6'9"

## FIRST FLOOR

- 7 BEDROOM 1  
5.33M X 3.59M | 17'6" X 11'9"
- 8 DRESSING AREA  
3.05M X 2.34M | 10'0" X 7'8"
- 9 BEDROOM 4  
3.95M X 2.89M | 13'0" X 9'6"
- 10 BALCONY  
1.89M X 0.83M | 6'3" X 2'9"

## SECOND FLOOR

- 11 BEDROOM 2  
5.33M X 3.95M | 17'6" X 13'0"
- 12 BEDROOM 3  
5.33M X 3.59M | 17'6" X 11'9"

\*Please speak to Sales Executive for further information. †Speak to Sales Consultant for individual property boundaries and planting scheme. Ceiling heights will vary. The coffered ceiling is just visual and not to scale. Floorplans shown for London Square Earlsfield are for approximate measurements only. Exact layouts and sizes may vary. All measurements may vary within a tolerance of +/-50mm. The dimensions are not intended to be used for carpet sizes, appliance sizes or items of furniture. Furniture layouts are indicative only. Kitchen layout is indicative only. Please ask a Sales Consultant for further information.

## KEY

- ◄► Measurement Points
- WC Cloakroom
- S Store Cupboard
- SC Service Cupboard
- TD Tumble Dryer
- WM Washing Machine
- UWC Understair Wine Cooler
- ES En-suite
- W Fitted Wardrobe
- ▭ Wardrobe Space
- ▭ Coffered Ceiling
- RS Refuse Store
- CS Cycle Store





**EARLSFIELD**  
SW17



SITEPLAN IS INDICATIVE ONLY.