



ONE BEDROOM APARTMENT

THE KEW

MILL HOUSE
APARTMENT 9, 15 & 21

CRANEFORD HOUSE
APARTMENT 9, 15 & 21

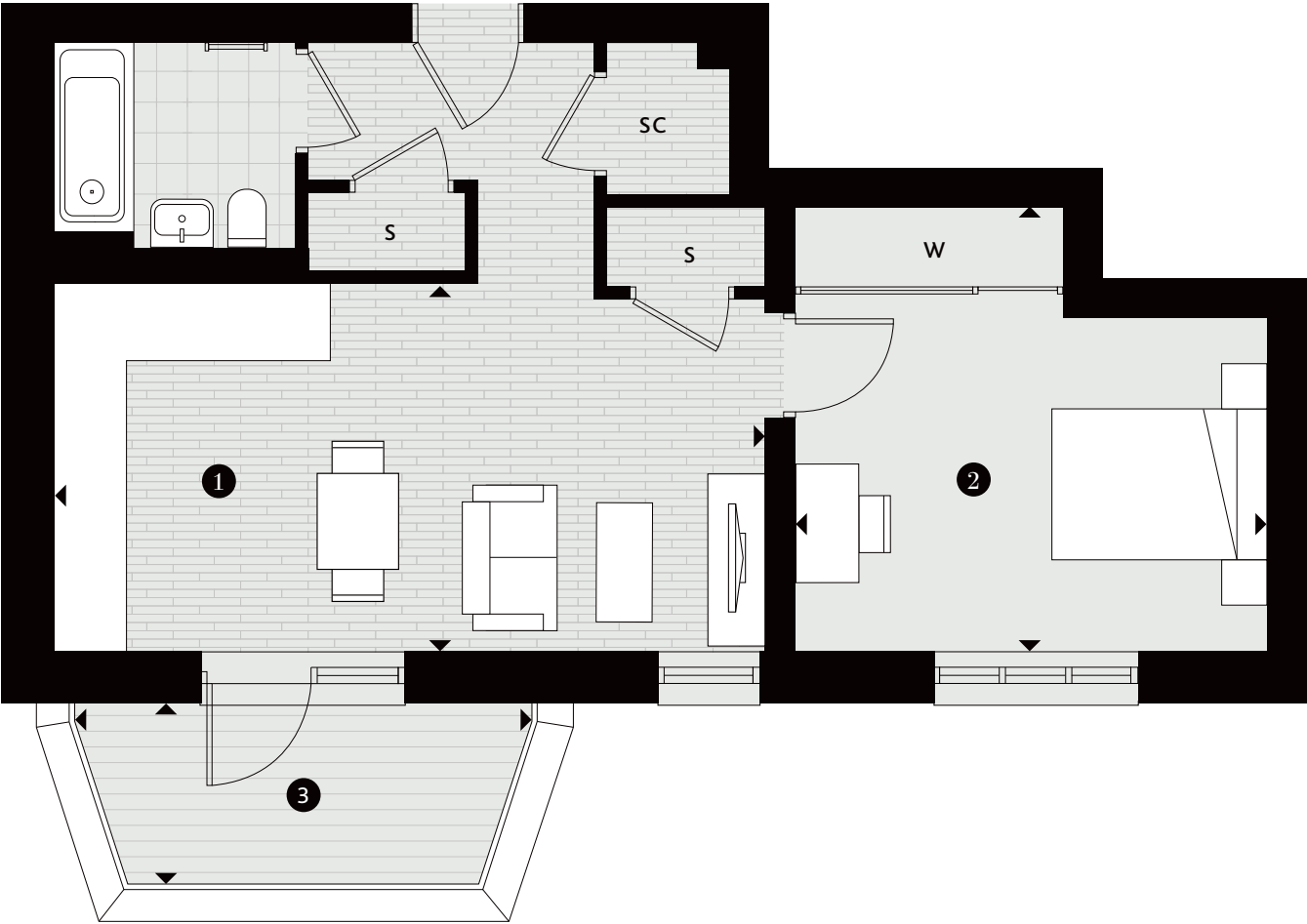
RIVIERA HOUSE
APARTMENT 8, 14 & 20

ONE BEDROOM

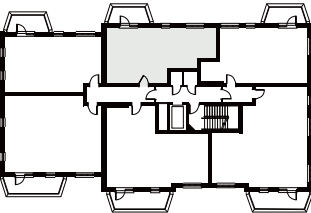
- 1 KITCHEN/LIVING/DINING
6.32M X 3.29M | 20'9" X 10'10"
- 2 BEDROOM 1
4.18M X 3.98M | 13'9" X 13'1"
- 3 BALCONY
4.05M X 1.61M | 13'3" X 5'3"

KEY

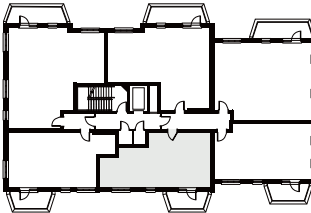
- Measurement Points
- ES En-suite
- S Store Cupboard
- SC Service Cupboard
- W Fitted Wardrobe
- Wardrobe Space



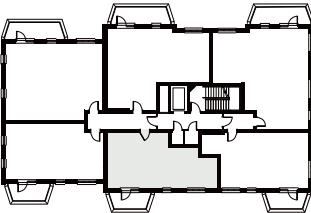
MILL HOUSE
FIRST FLOOR – APARTMENT 9
SECOND FLOOR – APARTMENT 15
THIRD FLOOR – APARTMENT 21



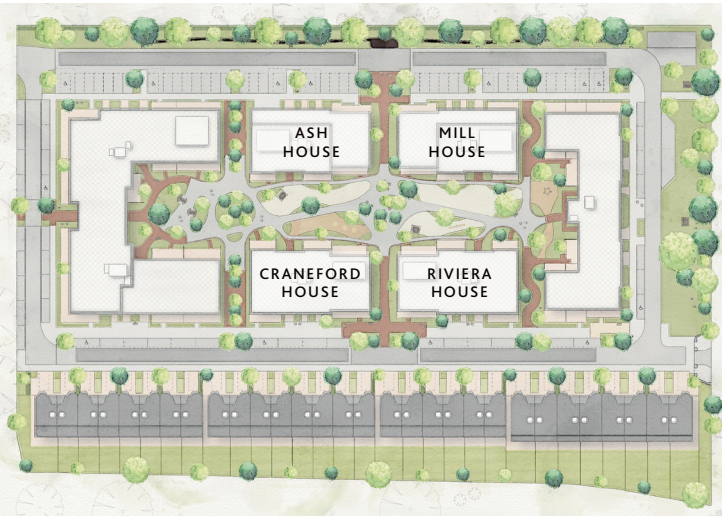
CRANEFORD HOUSE
FIRST FLOOR – APARTMENT 9
SECOND FLOOR – APARTMENT 15
THIRD FLOOR – APARTMENT 21



RIVIERA HOUSE
FIRST FLOOR – APARTMENT 8
SECOND FLOOR – APARTMENT 14
THIRD FLOOR – APARTMENT 20



SITE PLAN



Terraces and balconies will vary between blocks. Ceiling heights will vary. Floorplans shown for Twickenham Square are for approximate measurements only. Exact layouts and sizes may vary. All measurements may vary. The dimensions are not intended to be used for carpet sizes, appliance sizes or items of furniture. Furniture layouts are indicative only. Kitchen layout is indicative only. Please ask a Sales Consultant for further information.