



ONE BEDROOM APARTMENT

THE KINGSTON

MILL HOUSE  
APARTMENT 10, 16 & 22

CRANEFORD HOUSE  
APARTMENT 10, 16 & 22

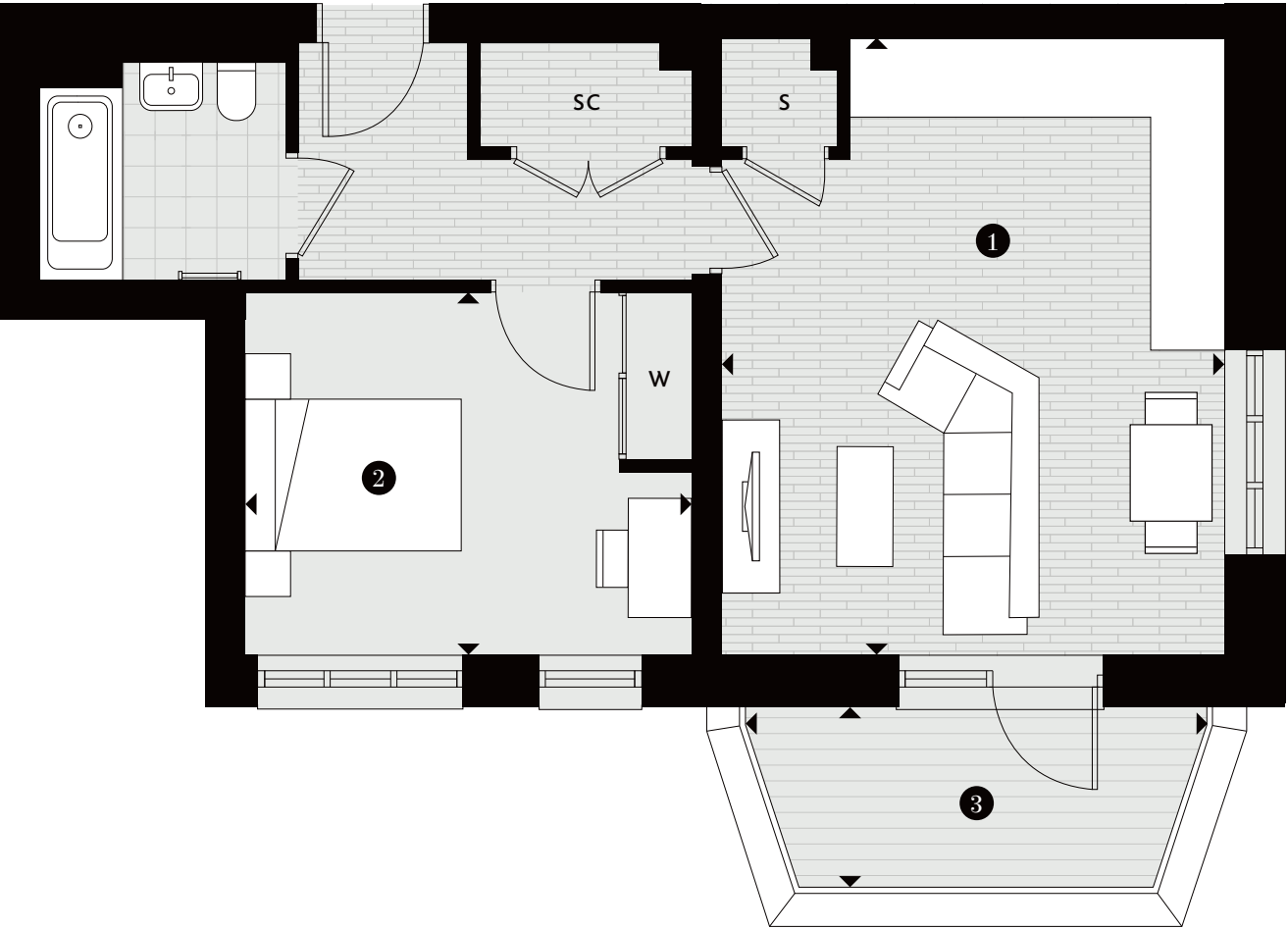
RIVIERA HOUSE  
APARTMENT 7, 13 & 19

ONE BEDROOM

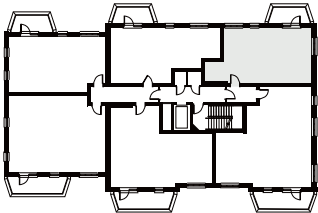
- 1 KITCHEN/LIVING/DINING  
5.44M X 4.43M | 17'10" X 14'6"
- 2 BEDROOM 1  
3.95M X 3.22M | 13'0" X 10'7"
- 3 BALCONY  
3.13M X 1.59M | 10'3" X 5'3"

KEY

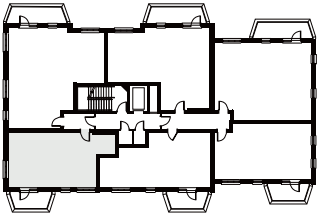
- Measurement Points
- ES En-suite
- S Store Cupboard
- SC Service Cupboard
- W Fitted Wardrobe
- Wardrobe Space



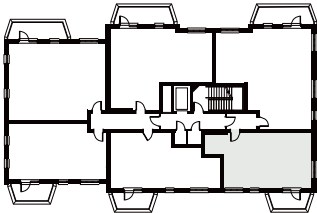
MILL HOUSE  
FIRST FLOOR – APARTMENT 10  
SECOND FLOOR – APARTMENT 16  
THIRD FLOOR – APARTMENT 22



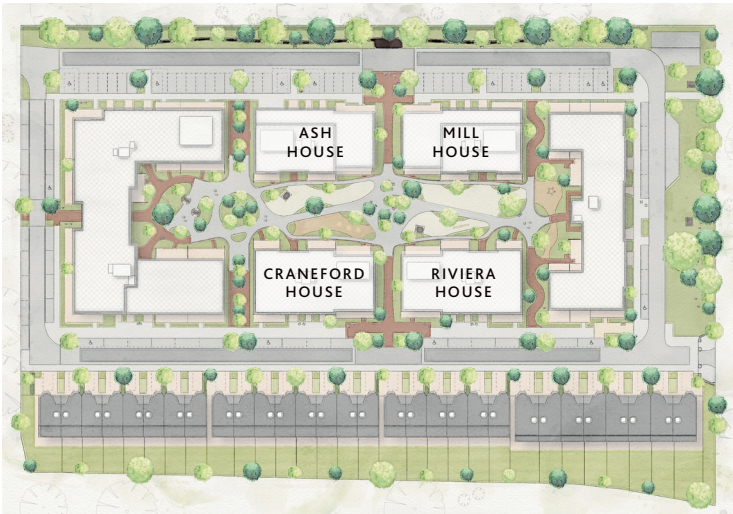
CRANEFORD HOUSE  
FIRST FLOOR – APARTMENT 10  
SECOND FLOOR – APARTMENT 16  
THIRD FLOOR – APARTMENT 22



RIVIERA HOUSE  
FIRST FLOOR – APARTMENT 7  
SECOND FLOOR – APARTMENT 13  
THIRD FLOOR – APARTMENT 19



SITE PLAN



Terraces and balconies will vary between blocks. Ceiling heights will vary. Floorplans shown for Twickenham Square are for approximate measurements only. Exact layouts and sizes may vary. All measurements may vary. The dimensions are not intended to be used for carpet sizes, appliance sizes or items of furniture. Furniture layouts are indicative only. Kitchen layout is indicative only. Please ask a Sales Consultant for further information.