



TWO BEDROOM APARTMENT

THE OSTERLEY

MILL HOUSE
APARTMENT 11, 17 & 23

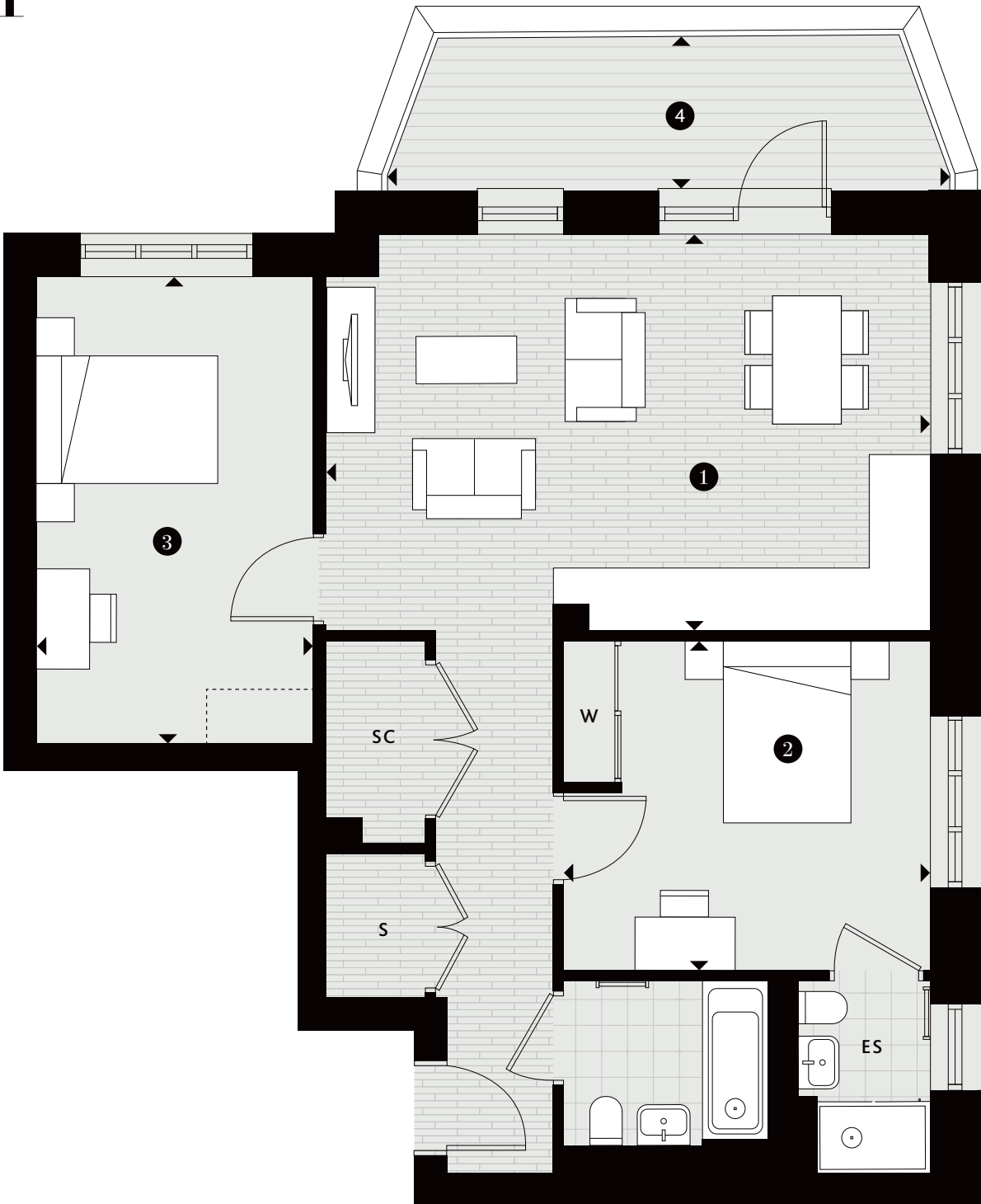
CRANEFORD HOUSE
APARTMENT 11, 17 & 23

RIVIERA HOUSE
APARTMENT 6, 12 & 18

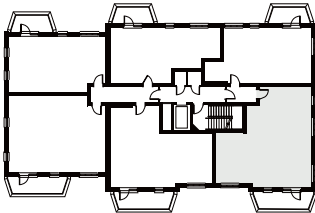
TWO BEDROOM

- 1 KITCHEN/LIVING/DINING
6.33M X 4.16M | 20'9" X 13'8"
- 2 BEDROOM 1
3.85M X 3.48M | 12'8" X 11'5"
- 3 BEDROOM 2
4.87M X 2.89M | 16'0" X 9'6"
- 4 BALCONY
5.85M X 1.61M | 19'2" X 5'3"

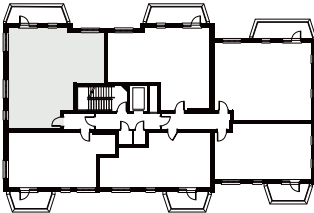
- KEY
- ◄► Measurement Points
 - ES En-suite
 - S Store Cupboard
 - SC Service Cupboard
 - W Fitted Wardrobe
 - ▤ Wardrobe Space



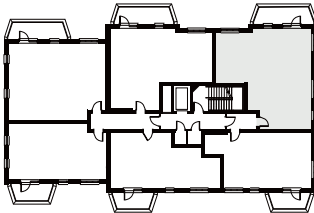
MILL HOUSE
FIRST FLOOR – APARTMENT 11
SECOND FLOOR – APARTMENT 17
THIRD FLOOR – APARTMENT 23



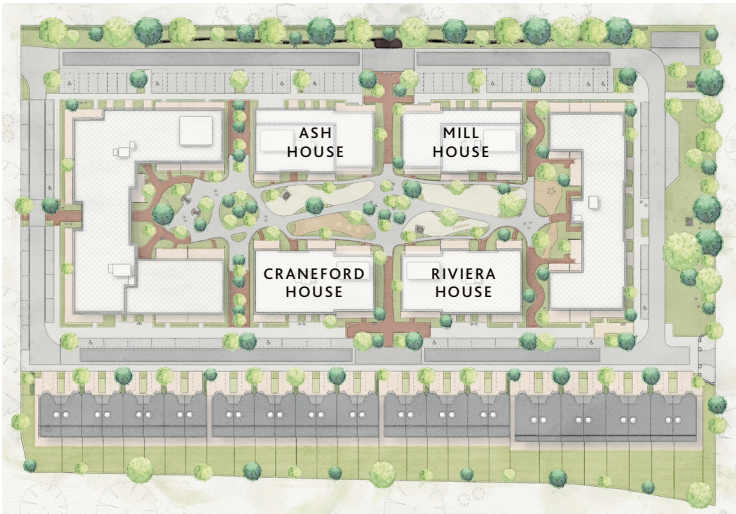
CRANEFORD HOUSE
FIRST FLOOR – APARTMENT 11
SECOND FLOOR – APARTMENT 17
THIRD FLOOR – APARTMENT 23



RIVIERA HOUSE
FIRST FLOOR – APARTMENT 6
SECOND FLOOR – APARTMENT 12
THIRD FLOOR – APARTMENT 18



SITE PLAN



Terraces and balconies will vary between blocks. Ceiling heights will vary. Floorplans shown for Twickenham Square are for approximate measurements only. Exact layouts and sizes may vary. All measurements may vary. The dimensions are not intended to be used for carpet sizes, appliance sizes or items of furniture. Furniture layouts are indicative only. Kitchen layout is indicative only. Please ask a Sales Consultant for further information.