



LONDON
SQUARE

BERMONDSEY

SE1



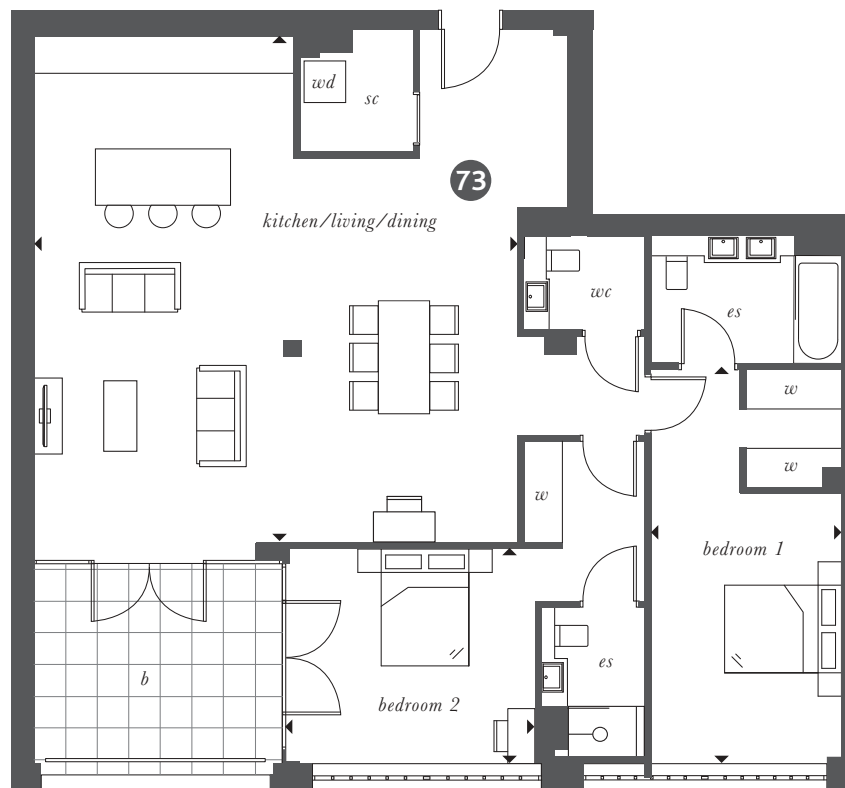
The
BLACKWELL COLLECTION

PLOT 73



PLOT 73

- Two bedroom apartment spanning 1302 sq ft
- South facing balcony with access from living area and bedroom 2
- Principal bedroom with walk-in wardrobe and ensuite
- Bedroom 2 with ensuite and fitted wardrobe
- Kitchen by award-winning SieMatic featuring kitchen island with breakfast bar, integrated appliances, boiling tap and 5-ring induction hob
- Secure underground parking available
- 24 hr concierge and gym
- Landscaped Beach Gardens for Pickle Factory residents only with communal BBQ which can be booked through concierge



7TH
Floor



2 BEDROOM APARTMENT

KITCHEN/LIVING/DINING	7.98m x 7.68m	26'2" x 25'2"
BEDROOM 1	6.26m x 3.00m	20'7" x 9'10"
BEDROOM 2	3.93m x 3.38m	12'11" x 11'1"

KEY

SC = Service Cupboard

S = Storage

ES = En Suite

W = Wardrobe included

WD = Washer Dryer

B = Balcony

R = Riser

Please speak to your Sales Executive regarding ceiling heights, finishes, optional wardrobes and storage.

London Square Bermondsey, 58 Grange Road, London SE1 3BH
Monday - Saturday, 10am - 6pm (Thursday until 7pm), Sunday 11am - 4pm

0333 666 4343 | bermondsey@londonsquare.co.uk | www.londonsquare.co.uk

Imagery is of Plot 73. The dimensions shown are accurate to within +/- 50mm, they are not intended to be used for carpet sizes, appliances, spaces or items of furniture. All furniture is indicative and not supplied. These particulars should be treated as general guidance only, they do not constitute a contract, part of a contract or a warranty.