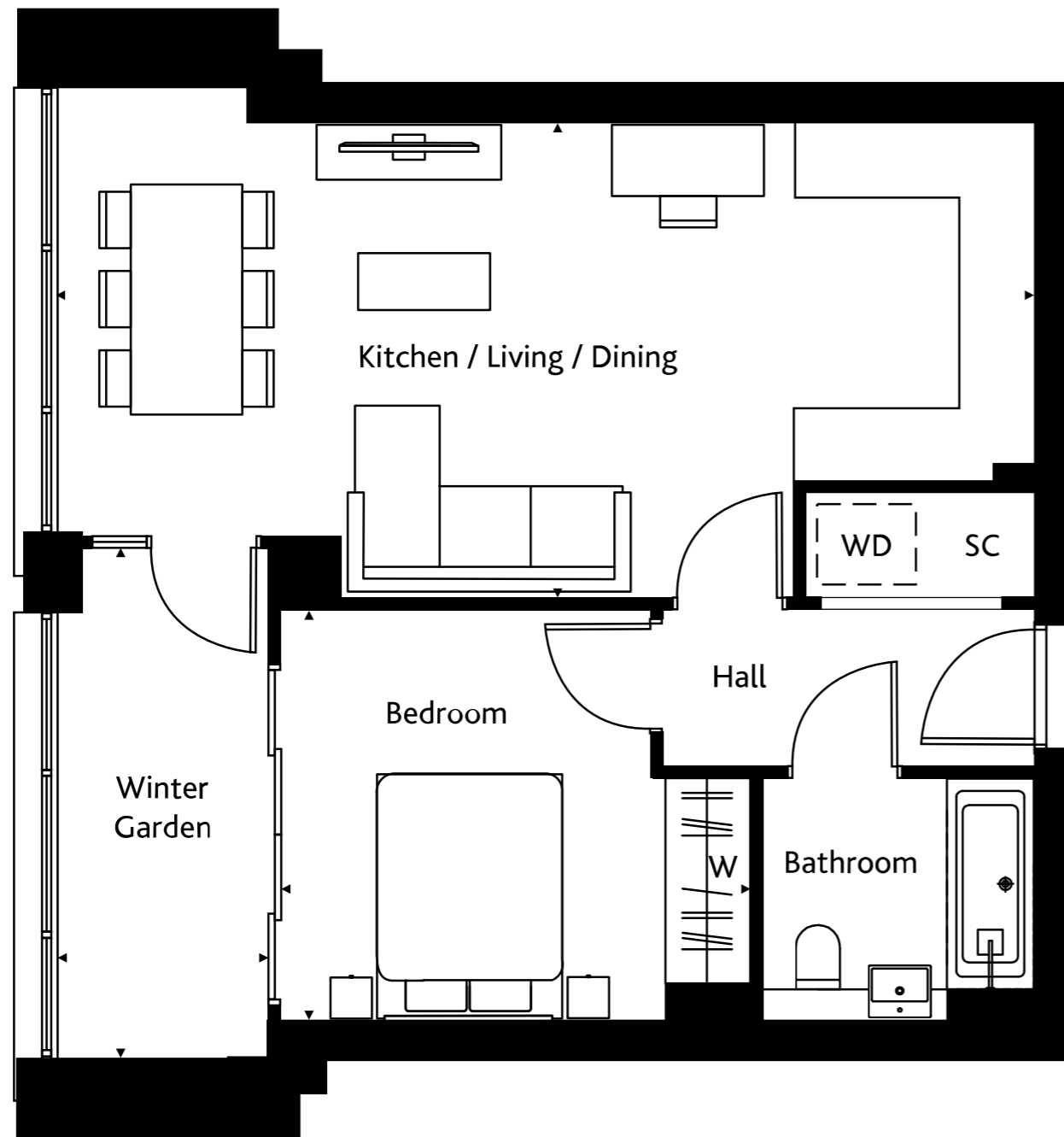
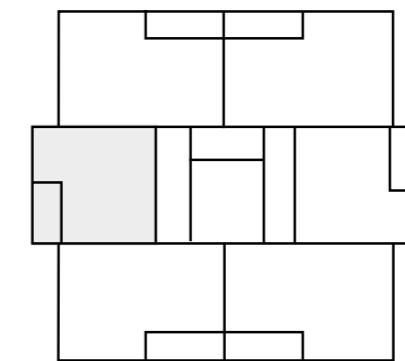


# 4th -17th floor



PLOTS 402, 502, 602, 702, 802,  
902, 1002, 1102, 1202, 1302, 1402,  
1502, 1602, 1702 1 Bedroom

Kitchen/Living/Dining	7.93m x 3.83m (20' x 12'17")
Bedroom 1	3.77m x 3.38m (12'5" x 11'1")
Winter Garden	1.77m x 4.07m (5'10" x 13'4")



4th-17th FLOOR

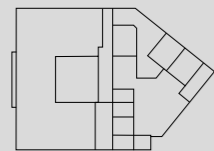
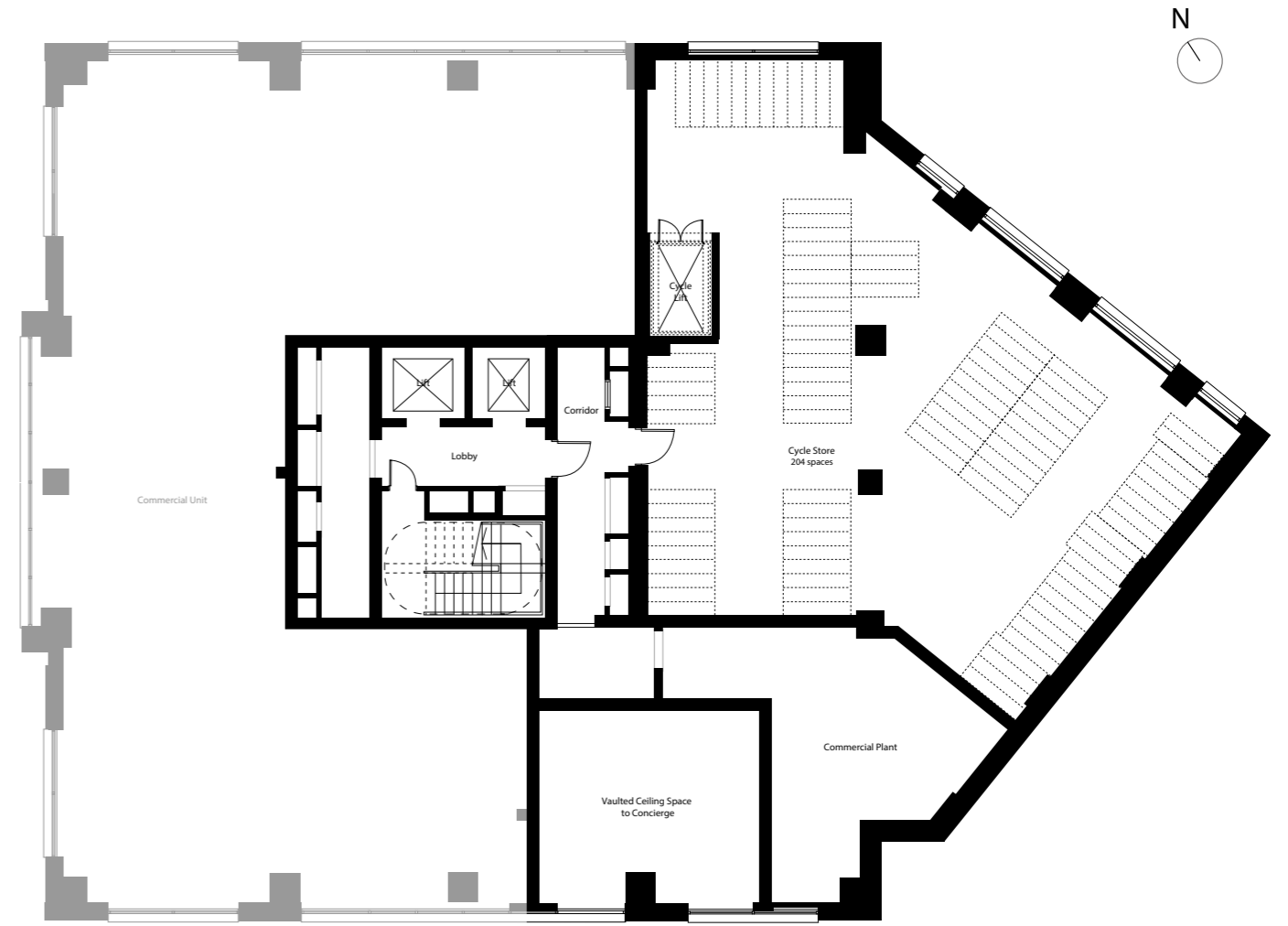
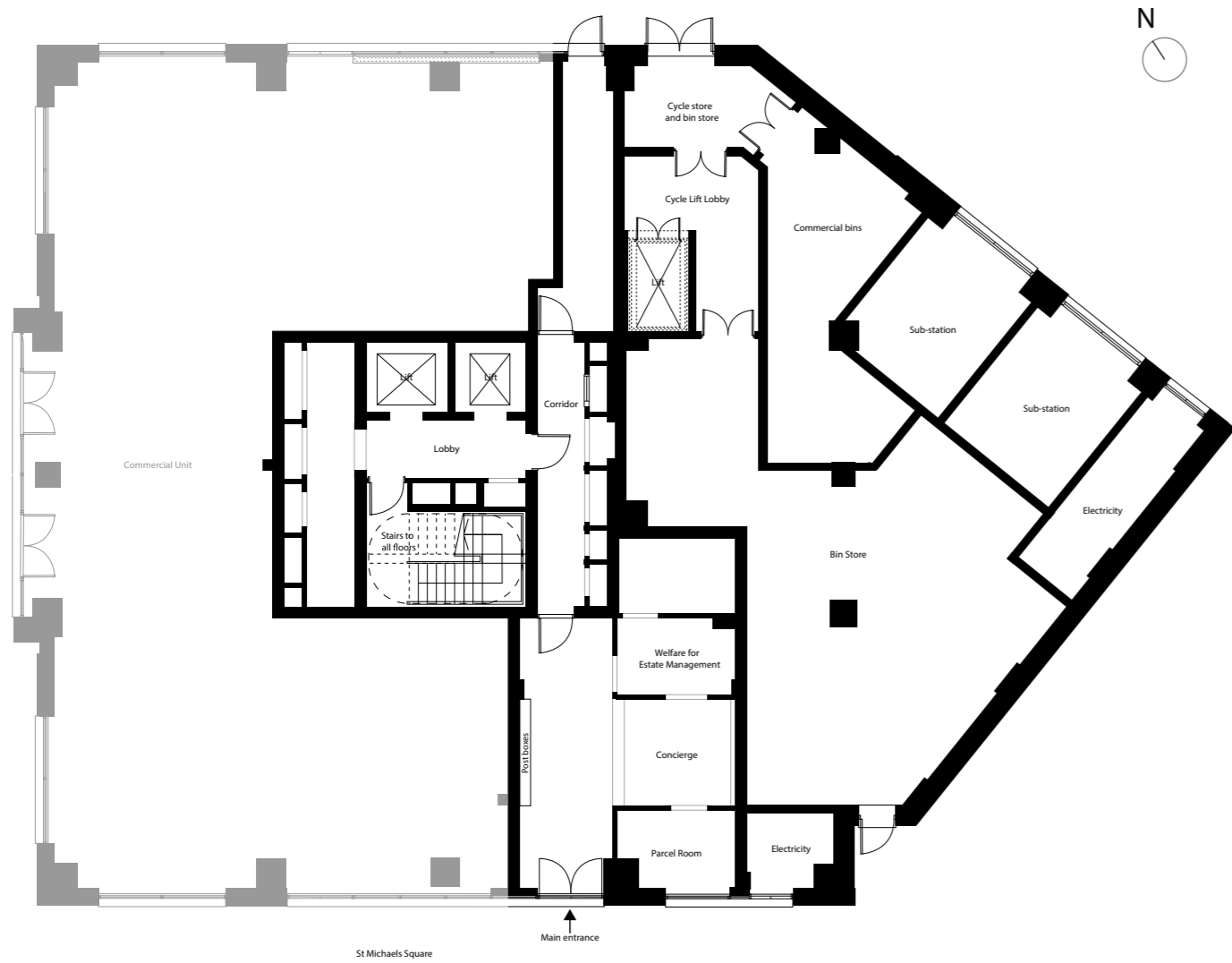
KEY

SC = Service Cupboard S = Storage C = Cupboard WD = Washer Dryer [W] = Fitted Wardrobe to bedroom 1 [W] = Optional Wardrobe location

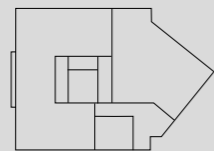
\*Obscured glazed window

# Ground

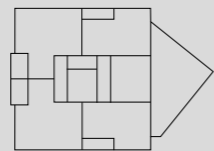
# 1st floor



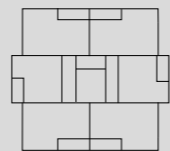
GROUND FLOOR



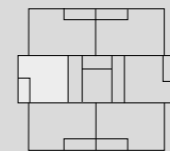
1st FLOOR



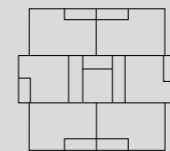
2nd FLOOR



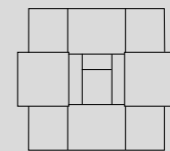
3rd FLOOR



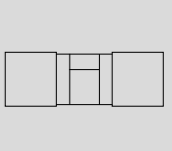
4th-17th FLOOR



18th-19th FLOOR



20th FLOOR



21st FLOOR

# All planned out



Situated right opposite West Croydon Station, the development will form an impressive new centrepiece for the area.

A new public square will open up the views of neighbouring Grade I listed St Michael's and All Angels Church, as well as providing a welcoming open space for the ground floor shops and eateries.

The landmark tower offers spectacular views over Croydon and towards London's famous skyline.



Walking distances are approximate and sourced from google maps.

Computer generated images are indicative only.