

# THE WESTCROFT

Three bedroom home

## PLOT 26

### Ground floor

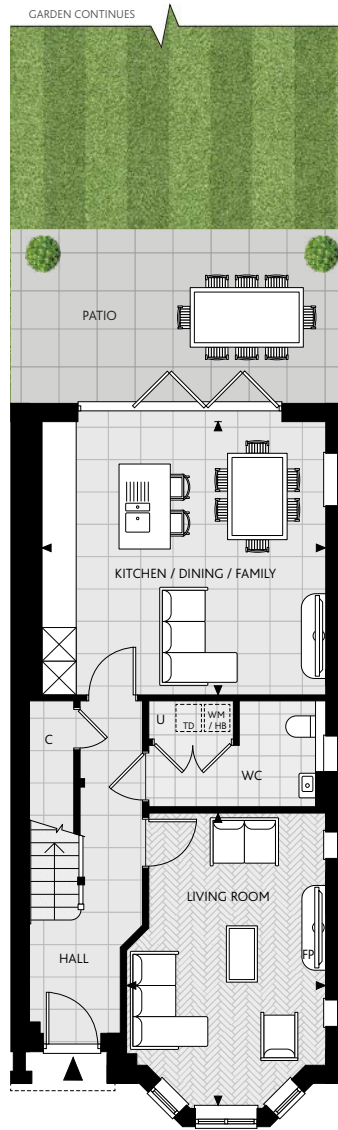
Kitchen/Dining/Family	4943mm x 4781mm	16' 2" x 15' 8"
Living Room	3495mm x 5171mm	11' 5" x 16' 11"

### First floor

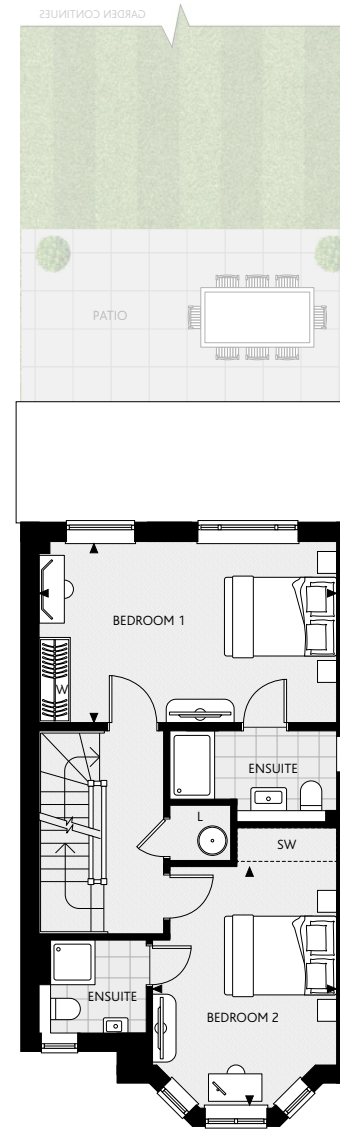
Bedroom 1	5205mm x 3206mm	17' 1" x 10' 6"
Bedroom 2	3197mm x 4251mm	10' 6" x 13' 11"

### Second floor

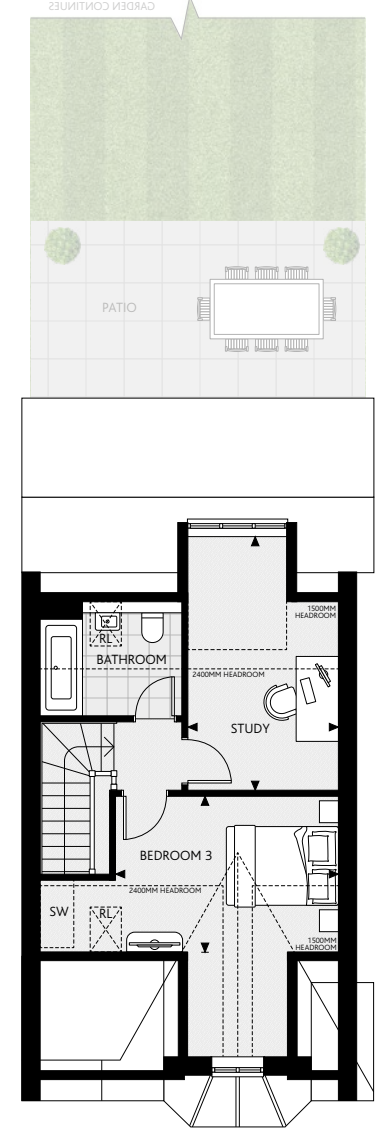
Bedroom 3	3872mm x 2701mm	12' 8" x 8' 10"
Bedroom 4	2600mm x 4450mm	8' 6" x 14' 7"



GROUND FLOOR



FIRST FLOOR



SECOND FLOOR

Floorplans shown for London Square, Walton-on-Thames are for approximate measurements only. Exact layouts and sizes may vary. All measurements may vary within a tolerance of 50mm. The dimensions are not intended to be used for carpet sizes, appliance sizes or items of furniture. Furniture and kitchen layouts are indicative only. Garden sizes may vary between plots. Please ask Sales Executive for further information.

KEY ◀▶ = Measurement Points C = Cupboard W = Wardrobe SW = Space for Wardrobe L = Linen Cupboard  
U = Utility Cupboard RL = Rooflight FP = Optional Upgrade Fireplace WM = Washing Machine TD = Tumble Dryer HB = Home water booster