



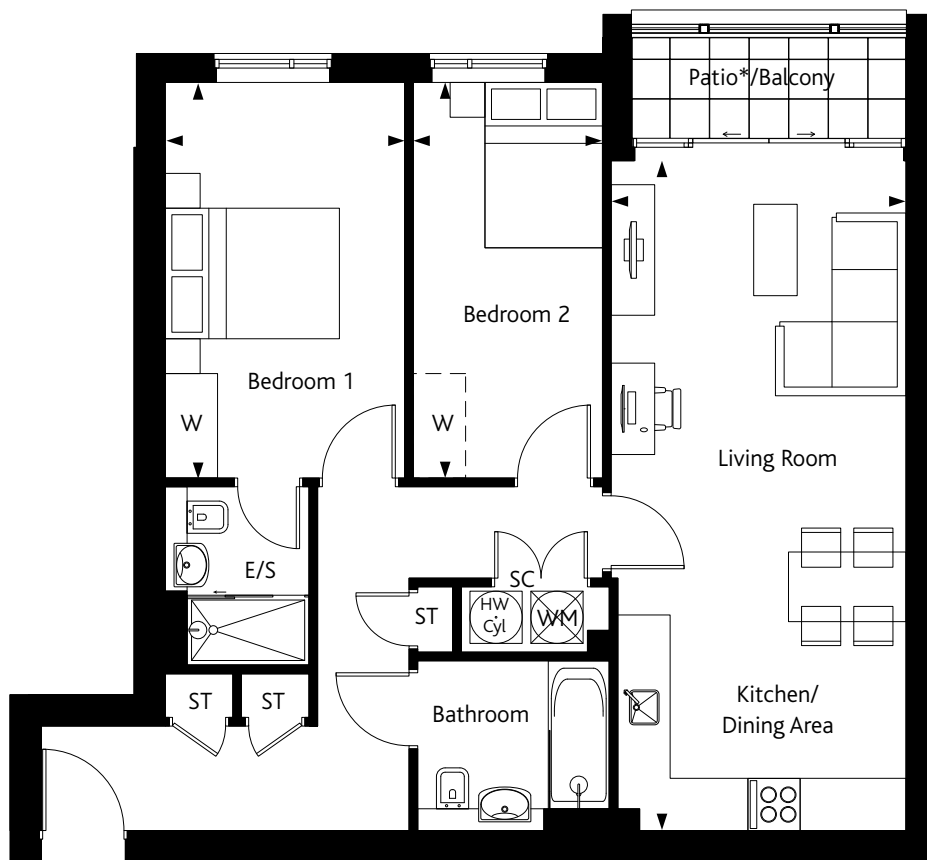
LONDON SQUARE

WATFORD

WD24

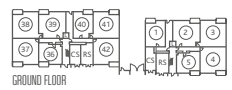
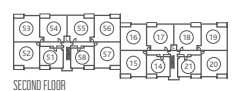
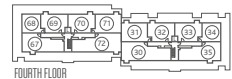
THE BARTON

2 BEDROOM APARTMENT
Plot 7



Kitchen/Living/Dining Room	7.65m x 3.34m	25'1" x 10'11"
Bedroom 1	4.50m x 2.70m	14'9" x 8'10"
Bedroom 2	4.50m x 2.12m	14'9" x 6'11"

- * Handed Plots
- ST = Store
- TD = Tumble Dryer
- RL = Roof Light
- SC = Service Cupboard
- RS = Refuse storage
- W = Included Wardrobe —
- W = Optional Wardrobe - - -
- WM = Washing Machine
- HW Cyl = Hot Water Cylinder
- CS = Cycle Store



Floorplans are not to scale, dimensions may vary between plots and kitchen layouts are indicative only. Please speak to your Sales Advisor for details.

➤ YOUR CLOSEST BUS STOP IS A 1 MINUTE WALK THAT CAN TAKE YOU TO WATFORD TOWN CENTRE IN 19 MINUTES.

