



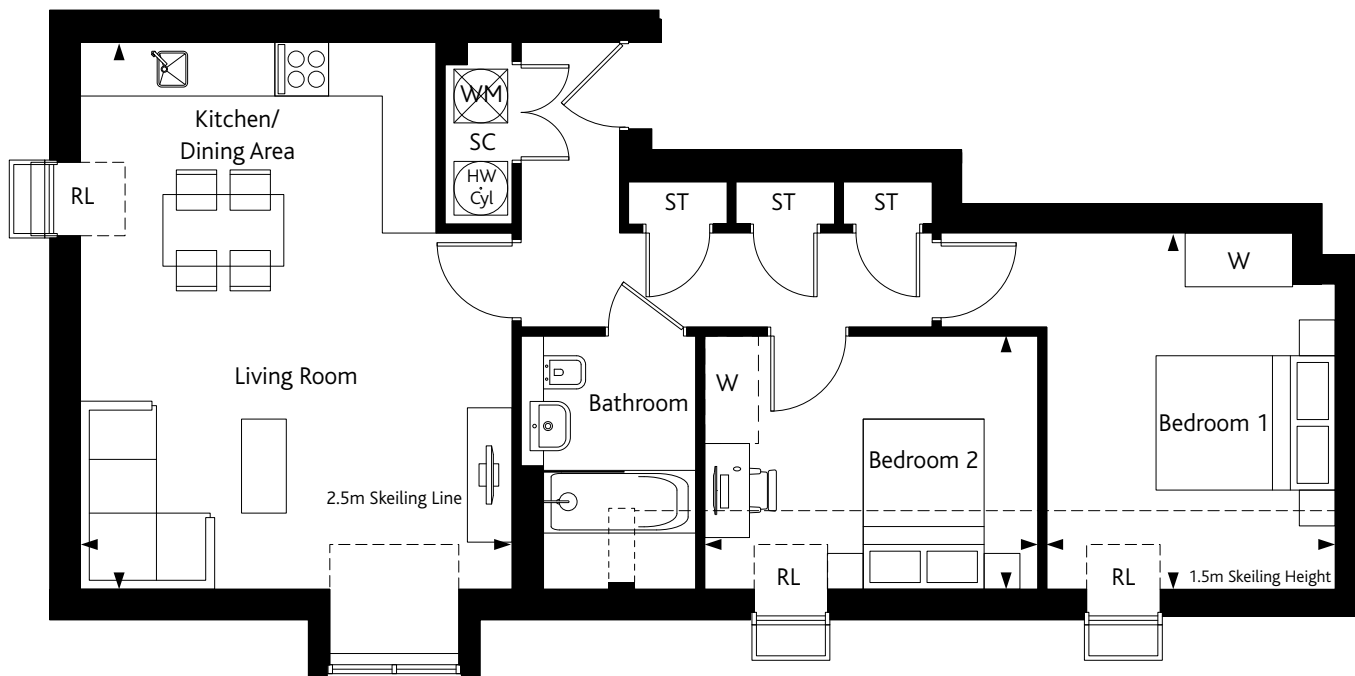
LONDON SQUARE

WATFORD

WD24

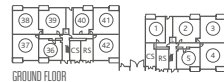
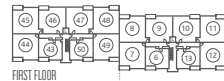
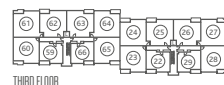
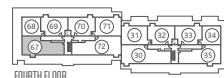
THE BELGRAVE

2 BEDROOM APARTMENT
Plot 67



Kitchen/Living/Dining Room	6.04m x 4.75m	19'10" x 15'7"
Bedroom 1	3.90m x 3.17m	12'10" x 10'5"
Bedroom 2	3.67m x 2.75m	12'0" x 9'0"

* Handed Plots	W = Included Wardrobe	—
ST = Store	W = Optional Wardrobe	- - -
TD = Tumble Dryer	WM = Washing Machine	
RL = Roof Light	HW Cyl = Hot Water Cylinder	
SC = Service Cupboard	CS = Cycle Store	
RS = Refuse storage		



Floorplans are not to scale, dimensions may vary between plots and kitchen layouts are indicative only. Please speak to your Sales Advisor for details.

➤ YOUR CLOSEST BUS STOP IS A 1 MINUTE WALK THAT CAN TAKE YOU TO WATFORD TOWN CENTRE IN 19 MINUTES.

