



LONDON SQUARE
BERMONDSEY

FEAST ON CITY LIVING FEAST ON CITY LIVING FEAST ON CITY LIVING



VOLCANO COFFEE
SPECIALITY TREATS
BREAD
PASTRIES
EGGS
BUTTER
SOUP
SALADS
SANDWICHES
SCOTCH EGGS
SAUSAGE ROLLS
PIES

WE ARE OPEN
07:30-23:00
EVERY DAY
COFFEES TEAS
PASTRIES CAKELES
SALADS WINE
COCKTAILS SANDWICHES
B STREET DELI

WELCOME TO

The place where everyone wishes they lived, Bermondsey is a neighbourhood with an independent rhythm that both small start-ups and titans of the food, arts and cultural world call home. A neighbourhood that feels and acts like a capital but with a fiercely loyal, tight-knit community.

Tube and train on the doorstep makes commuting and exploring a breeze, but its proximity to the City makes it just as easy to grab a bike or walk. Plus, some of the best universities in the country are within an easy 30-minute commute.

Slap-bang in SE1, this is city living for feasting on.



BERMONDSEY

CONTENTS

LOCAL AREA

MADE FOR CITY LIFE
05-17



RESIDENCES

LIFE AT LSQ
BERMONDSEY
18-25

PLANS

A HOME FOR EVERY TASTE
26-37



DEVELOPER

CREATING PLACES
TO THRIVE
37-40

MADE FOR
CITY LIFE
MADE FOR
CITY LIFE
MADE FOR
CITY LIFE

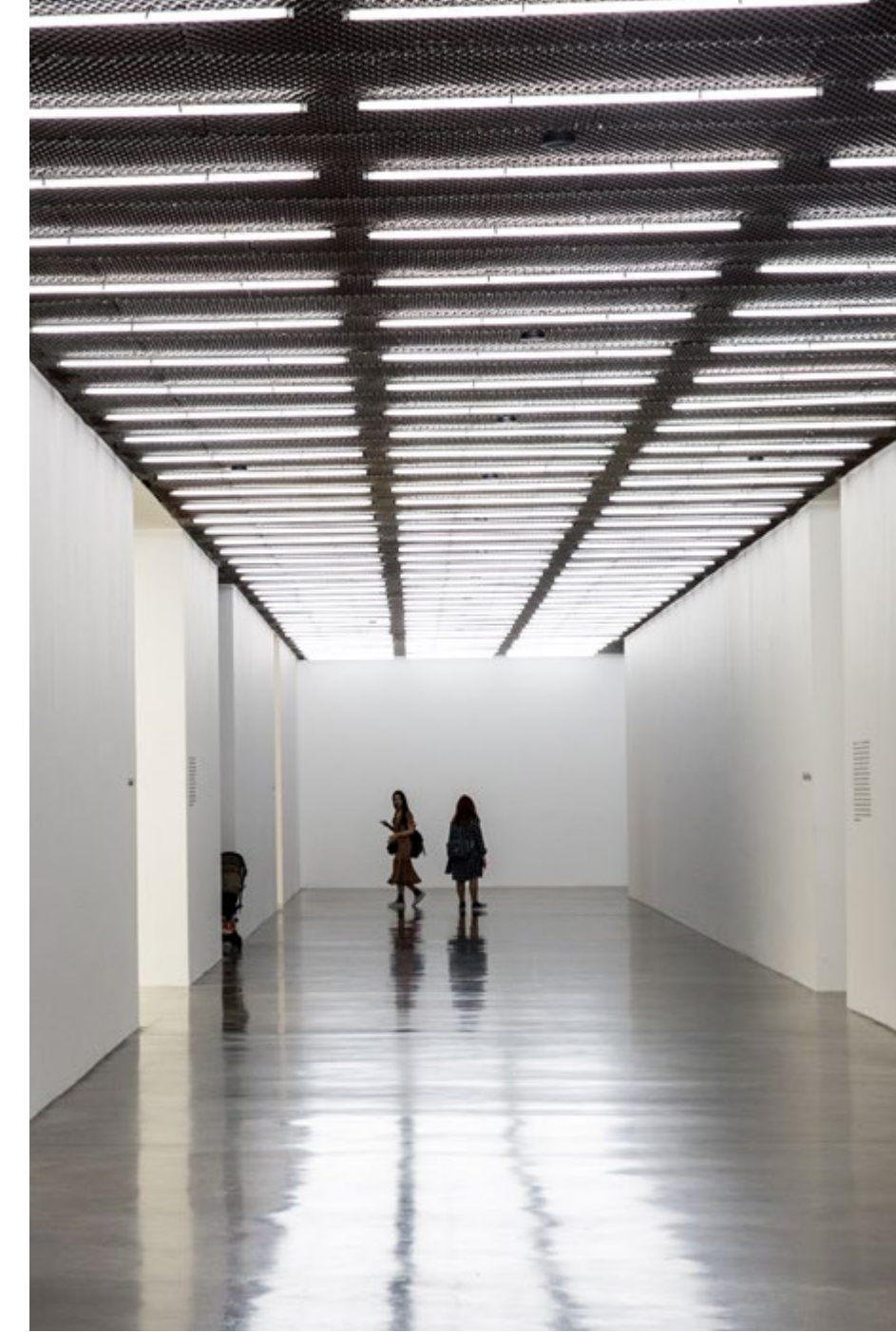


LOCAL AREA

LOCAL AREA

MODERN, METROPOLITAN LIFE REALISED

Bermondsey is where the best of London life is served. Shaped by its industrial past and coloured by its cultural present – this is a place for city lovers and bon vivants. With Bermondsey Street on the doorstep you can expect world-famous art galleries, Michelin-starred restaurants, artisanal markets, independent boutiques, quaint bookshops and the oldest antiques market in the UK.



BERMONDSEY AT A GLANCE

100⁺

places to eat
(inc. four Michelin-starred
restaurants)

11

independent breweries
(the highest of any
London borough)

47

parks and 250+ acres
of green space within
a 30-minute walk

12

minute walk to
London Bridge station

30

minute commute
to some of London's
top universities

PARKS

- 01 Tanner Street Park
- 02 Leathermarket Gardens
- 03 Bermondsey Spa Gardens
- 04 Geraldine Mary Hamsworth Park

FITNESS

- 05 Pace Club London Bridge
- 06 Milo and The Bull (Reformer)
- 07 F45 Cannon Street
- 08 The Circle Gym & Spa
- 09 Nelo Wellness

CUISINE

- 10 Maltby Street Market
- 11 José Tapas Bar
- 12 Borough Market
- 13 Trivet
- 14 Restaurant Story
- 15 Bermondsey Arts Club

ARTS & CULTURE

- 16 Drawing Room
- 17 White Cube
- 18 Fashion and Textile Museum
- 19 The Arzner Cinema

UNIVERSITIES

- 20 King's College London
- 21 University of the Arts London
- 22 London South Bank University
- 23 University College London
- 24 Central Saint Martins
- 25 London School of Economics and Political Science



HISTORY IN THE MAKING

During the Industrial Revolution, Bermondsey went from a quiet, rural area to the centre of British manufacturing almost overnight. A hub for London's leather tanning, food processing, and shipping industries, iconic factories like Peek Freans, Hartley's and Christys & Co dominated the area.

Today, it's better known for its world-famous art galleries and moreish food scene; with glassblowing galleries on Bermondsey Street and cheesemakers in the infamous railway arches. However, that sense of bustling industry and eclectic culture is still very much alive.





EAT UP

Bermondsey's age-old reputation as 'London's Larder' still holds today, with thousands of locals and tourists spilling down from Borough Market every weekend to tuck into Maltby Street Market's Duck Frites, doughnuts and cheese toasties, before tackling the Bermondsey Beer Mile.

But it's not all hearty food stalls. On the other end of the scale you'll find exquisite small plates at José, mouth-watering Italian dishes at Cafe Murano and Michelin-starred dining at Trivet. In-between there are more bistros, gastro pubs, brunch spots and coffee houses than you can shake a stick at – cementing Bermondsey as one of the most exciting, vibrant and dynamic food destinations in the capital.

THE ART OF LIVING, MASTERED

Home to some of London's top galleries, art lovers can walk around the White Cube for contemporary art, the Kristin Hjellegjerde Gallery for emerging international artists, the UK's foremost glassblowing studio and gallery founded by Peter Layton, and the Fashion & Textile Museum for fashion-focused exhibits.

And with artisanal markets selling handcrafted gifts and vintage gems, to intimate gigs in the park and spoken word sets at Morocco Bound, there's always something cultural around the corner.

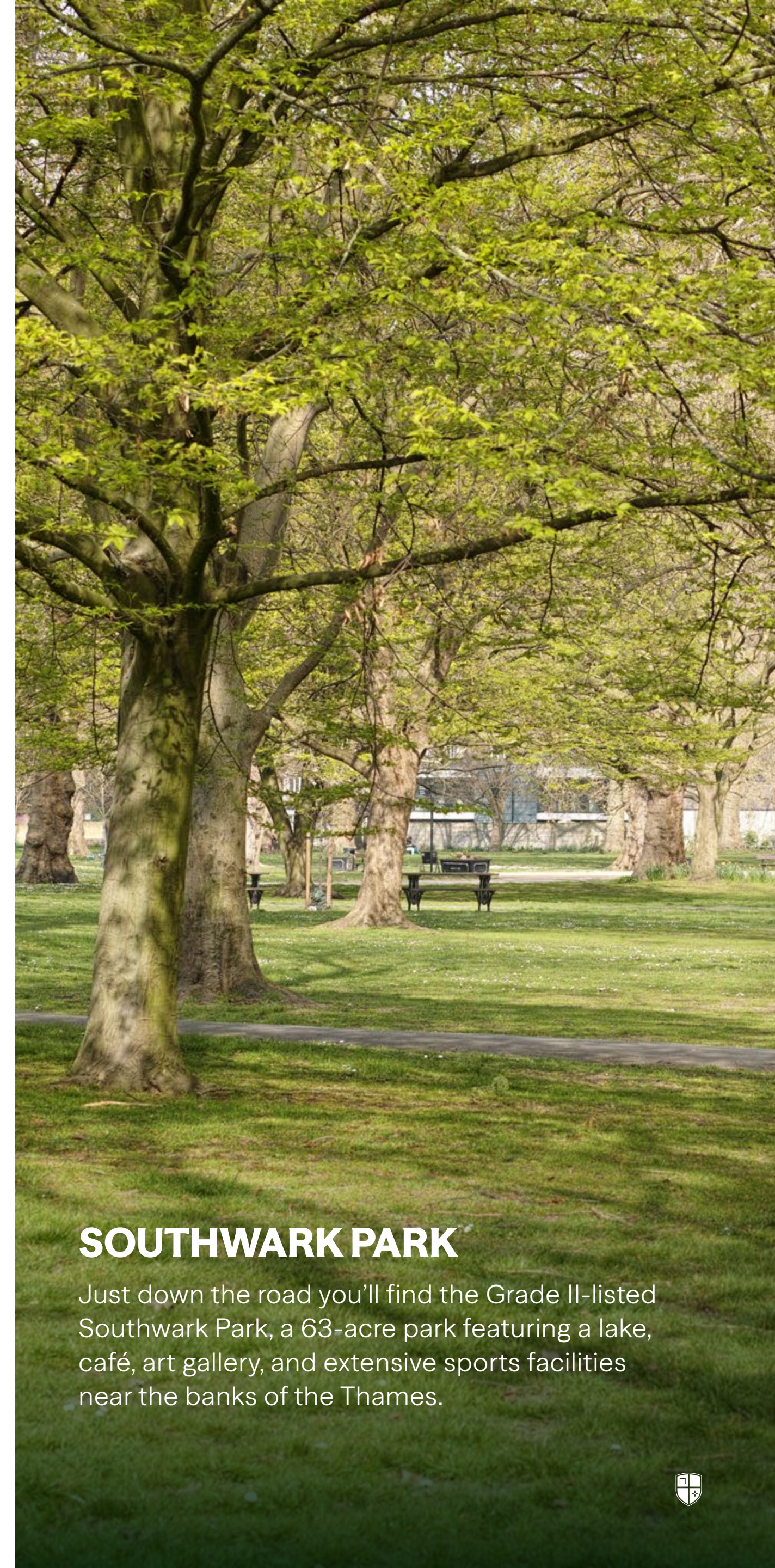


THE GREAT OUTDOORS

For those who crave a daily dose of nature or need to log a 10k before work starts, there is a rich mix of green spaces to enjoy; from expansive parks to intimate, historic gardens. And of course, beyond all the green space, the river is never far away.

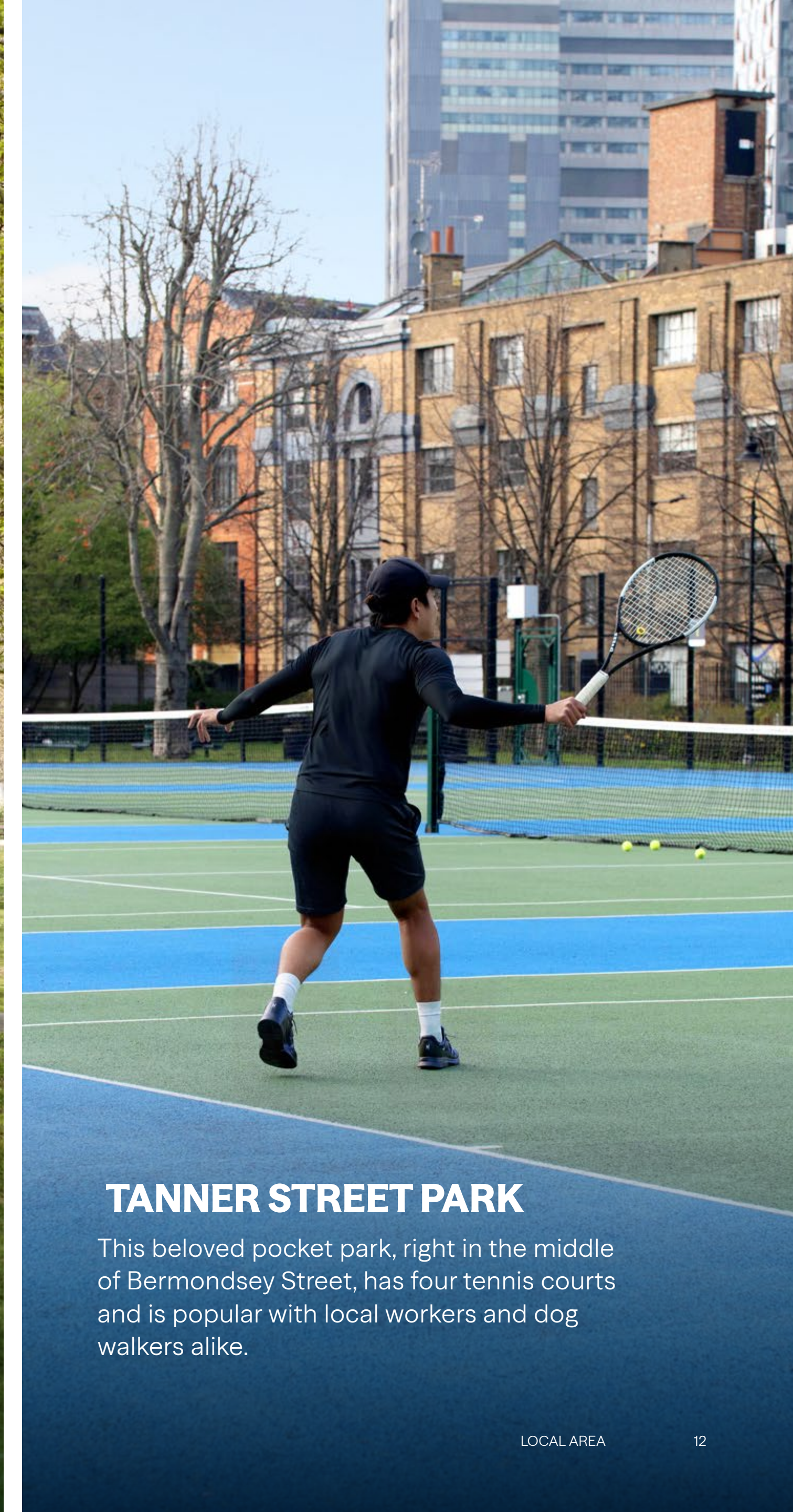


LONDON SQUARE BERMONDSEY



SOUTHWARK PARK

Just down the road you'll find the Grade II-listed Southwark Park, a 63-acre park featuring a lake, café, art gallery, and extensive sports facilities near the banks of the Thames.



TANNER STREET PARK

This beloved pocket park, right in the middle of Bermondsey Street, has four tennis courts and is popular with local workers and dog walkers alike.

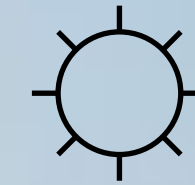
RISE AND SHINE

Once known affectionately as 'Biscuit Town', foodies from all over the capital flock to the many eateries, fine-dining spots, and global street-food stalls. But it's not all food, as there's a smorgasbord of other local cultural activities to nibble on.



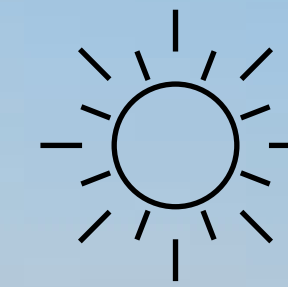
WATCHHOUSE, BERMONDSEY STREET

You're spoiled for choice for cafés on Bermondsey Street, but you won't find many housed in a former church watch house. Start your day with one of their batch brews and signature pastries.



BERMONDSEY CORNER, BERMONDSEY STREET

Bag yourself a window seat and get stuck into a book or some people watching. And before you leave, be sure to pick up one of their hand selected wines for later.



MALTBY STREET MARKET

This hidden gem has evolved into one of the capital's most exciting destinations - an urban alleyway alive with sizzling grills, artisan produce, and global culinary flair.



NIGHT AFTER NIGHT

As evening falls, Bermondsey is only just getting started. With evening bakery schools, after-work pottery classes, and arts and creative workshops, there's plenty to keep your hands full. Equally, wander along Bermondsey Street and take your pick of excellent restaurants and bars. Or, head to The Arzner, an independent cinema proudly based in Bermondsey Square.



PIZARRO, BERMONDSEY STREET

One of two restaurants on the street from the godfather of Spanish cooking, José Pizarro, this spot is perfect for an evening date.



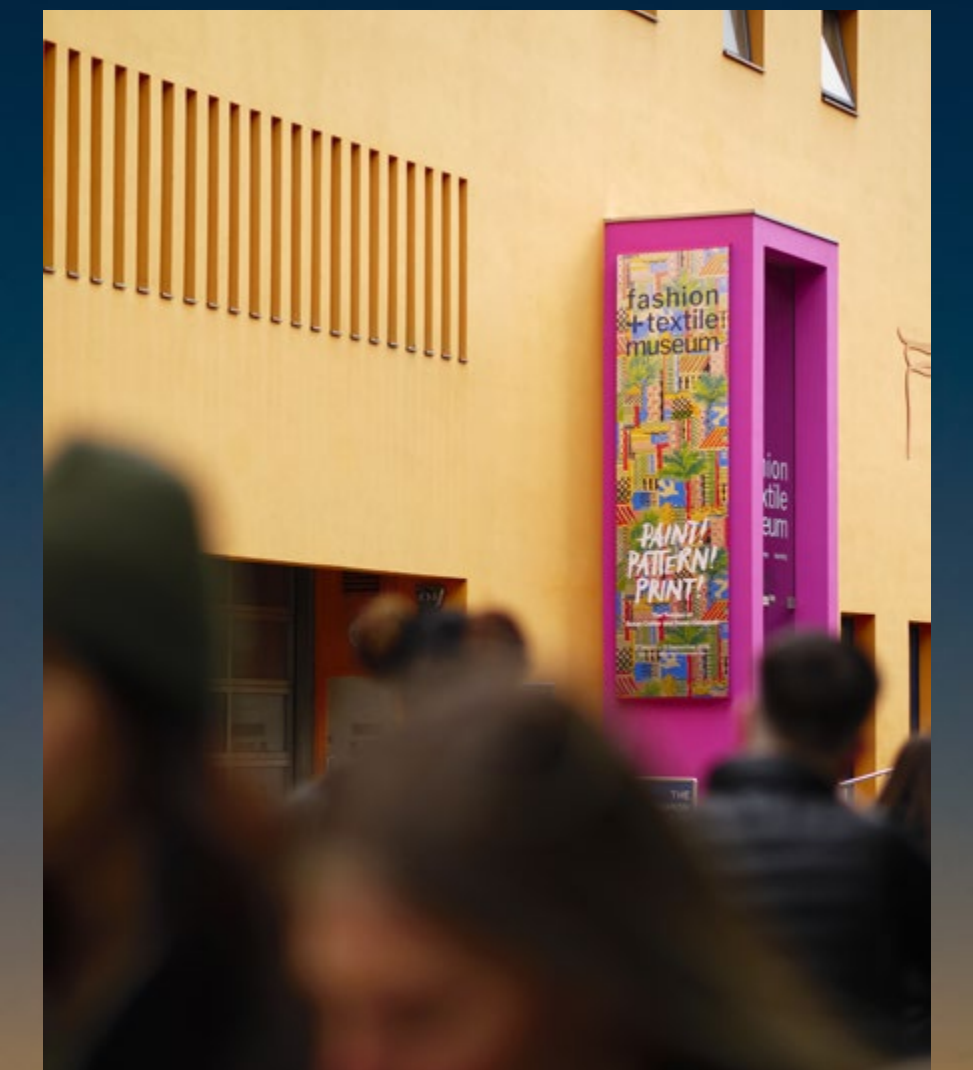
BERMONDSEY ARTS CLUB

This Art Deco speakeasy may be located beneath your feet, but this beloved bar serves up some of the best cocktails in town, plus live jazz on Tuesdays and Wednesdays.



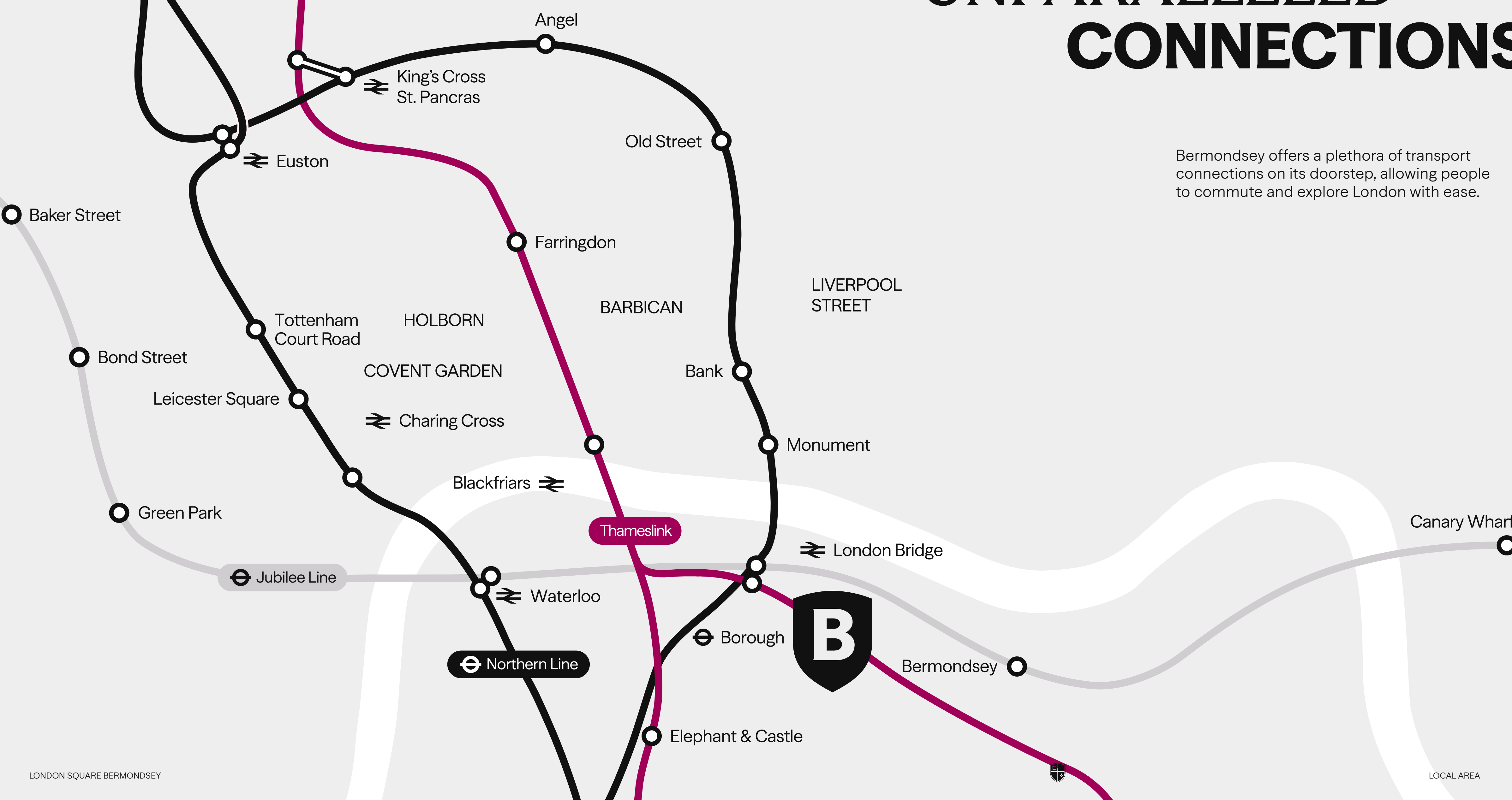
FASHION AND TEXTILE MUSEUM

Grab some friends and book a 'Museum Lates' ticket to see some of the Fashion and Textile Museum's most popular exhibitions at night.



UNPARALLELED CONNECTIONS

Bermondsey offers a plethora of transport connections on its doorstep, allowing people to commute and explore London with ease.



UNLOCK THE CITY

Take your pick of three tube stations, all walking distance from London Square Bermondsey, or walk to London Bridge and access the rest of the capital via National Rail. Bolstered by international links, this is a city where connections are made.

TABLE OF TRAVEL TIMES

WALK

London Bridge Station	12mins
Bermondsey Station	13mins

JUBILEE LINE

London Waterloo	3mins
Westminster	5mins
Canary Wharf	6mins
Green Park	7mins
Bond Street	9mins



NORTHERN LINE



Bank	2mins
Moorgate	4mins
Old Street	6mins
King's Cross St. Pancras	10mins

THAMESLINK



Blackfriars	4mins
City Thameslink	6mins
Farringdon	8mins
St. Pancras International	11mins
St. Albans City	35mins

Times are taken from Google Maps and as such may vary



A SMART MOVE

Here, access is granted to world-class education at every key stage, from some of the best universities in the country – London School of Economics and Political Science, King’s College and University College London – to Ofsted-rated ‘Outstanding’ primaries on the doorstep. London offers students a truly cosmopolitan experience. And as the only city in the world to have 15 universities in the top 500, London is more than a smart investment, it’s an investment into your child’s future.



UNIVERSITIES	OFSTED RATING	DISTANCE (MILES)
London School of Economics and Political Science	–	2.1
King’s College London, Guy’s Campus	–	2
University of the Arts London, College of Communications	–	1.3
SECONDARY SCHOOLS		
St. Michael’s Catholic College	Outstanding	0.8
Harris Academy Bermondsey	Outstanding	0.31
INDEPENDENT SCHOOLS		
London Christian School	–	1
David Game College	–	1.24
PRIMARY SCHOOLS		
Boutcher Church of England Primary School	Outstanding	0.08
Surrey Square Primary School	Outstanding	0.5
PRE-SCHOOLS/NURSERIES		
Kintore Way Nursery School	Outstanding	0.2

LIFE AT LSQ
BERMONDSEY
LIFE AT LSQ
BERMONDSEY
LIFE AT LSQ
BERMONDSEY



LONDON SQUARE
BERMONDSEY

LONDON SQUARE
BERMONDSEY

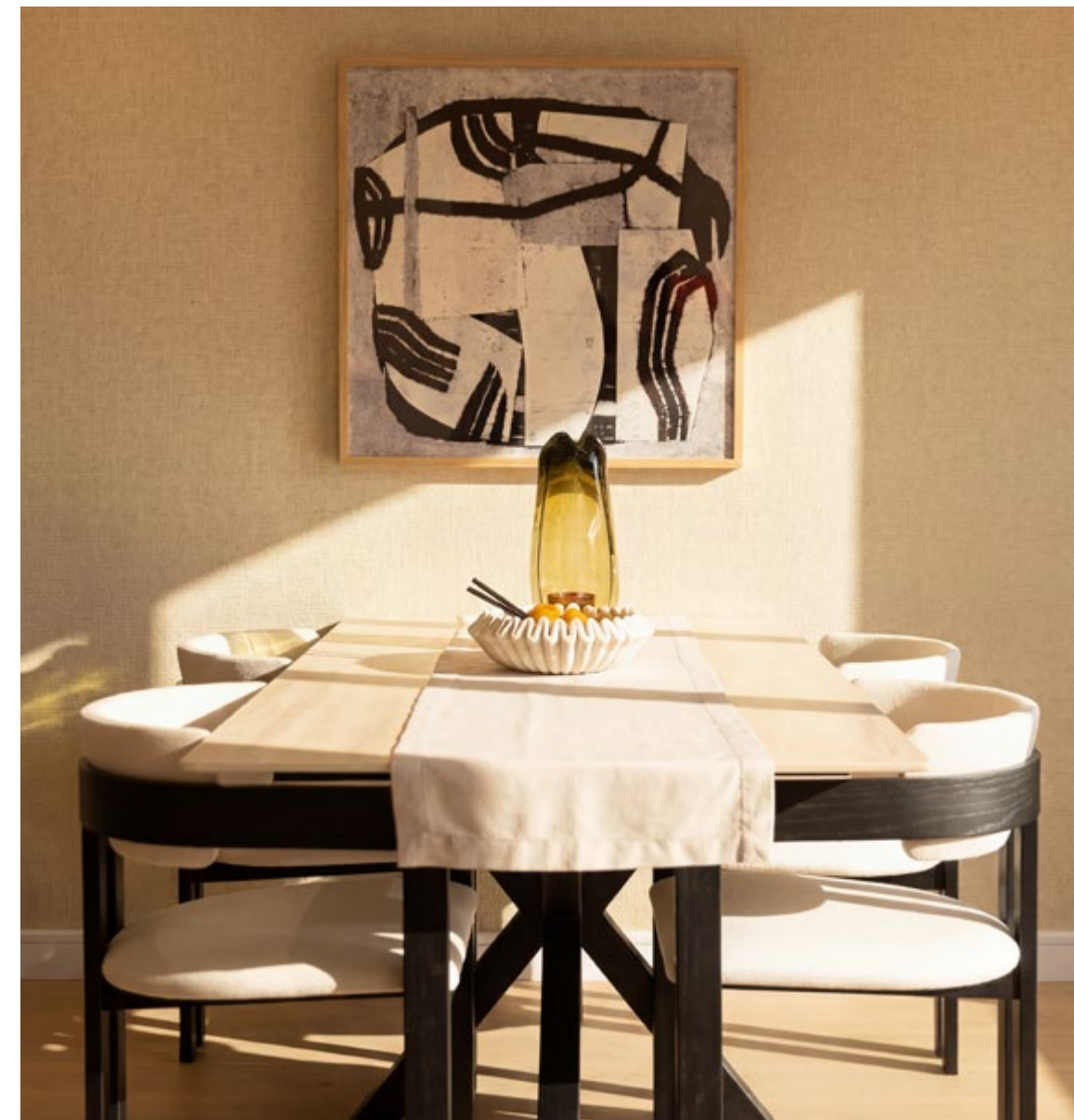
MAKE YOURSELF AT HOME

A stone's throw from Bermondsey Street, and a short walk from three tube stations, London Square Bermondsey is the third and final phase of an award-winning, established development that will serve up 123 beautifully designed 1, 2 and 3-bedroom apartments and penthouses.

With famous restaurants, green spaces, world-class universities on the doorstep and excellent connections across the capital, Bermondsey offers people the best of everything London has to offer.



THE FINER DETAILS





BEYOND YOUR HOME

Every day is elevated at Bermondsey, with resident amenities and thoughtfully designed spaces that bring balance, create connections and make daily life seamless.

AMENITIES

24-HR CONCIERGE

RESIDENT GYM

**GATED, LANDSCAPED
COURTYARD AND
ROOF TERRACE**



HOW CAN WE

As soon as you walk through the doors at London Square Bermondsey, you'll find our friendly concierge service, available day and night to take care of anything and everything you need.

BE OF SERVICE?

LEVEL UP

We understand that making time for a spin session or some squats before that big meeting is vital. It's why we have a 24-hour gym on the ground floor, so every resident can sweat it out or find their centre whenever it suits them and their busy lives.

YOUR WORKOUTS



ZONE ONE,

Shared resident spaces flow seamlessly into the outdoors with a gated, landscaped courtyard downstairs and roof terraces with spectacular views. So you don't have to go far to find a quiet space to switch off or to reconnect with a friend.

MADE ZEN





KITCHEN DESIGN

- Stainless steel tap for boiling and filtered water
- Tall oak-effect joinery
- Neutral finish high cabinets
- Bronze tinted glass high cabinets
- Corian solid work surfaces
- Feature porcelain tile splashback

APPLIANCES

Integrated Siemens appliances to include:

- Induction hob
- Microwave
- Oven
- Fridge / freezer
- Wine fridge
- Dishwasher

EXTERIOR

All apartments benefit balconies

- External up/down wall lights adjacent to balcony doors

COMMUNAL SPACES

- Concierge service
- Secure cycle store with lift access

GENERAL SPECIFICATION

- Oak-effect front door
- Oak-effect internal door
- Satin Nickel ironmongery
- Siemens washer / dryer in utility cupboard
- Oak-effect fitted wardrobes to principal bedrooms
- Optional wardrobe upgrades for additional bedrooms
- Engineered Oak flooring to all living areas, kitchen, and hallways
- Carpeted bedrooms

MECHANICAL & ELECTRICAL

- Recessed Aurora downlights throughout
- LED strip lighting to kitchen cabinets, and wardrobes
- USB & USB-C sockets in kitchen, living area, and principal bedroom
- Videophone door system
- High-speed fibre broadband provision
- Underfloor heating to all living areas
- Fob accessed front door with wifi connectivity

BATHROOM & EN-SUITES

- Large-format porcelain tiles to floors and wet area walls
- Baths benefit from ceiling-fixed rainfall shower head and wall-mounted handheld shower
- En-suite showers where applicable benefit from ceiling mounted rain and wall mounted handheld shower
- Terracotta coloured bespoke vanity
- Backlit mirror with brushed nickel frame
- Villeroy & Boch sanitaryware
- Brushed nickel brassware
- Heated towel rail
- LED feature lighting to bath and shower niches and basin vanity

SECURITY & PEACE OF MIND

- Hardwired smoke and heat detectors
- Sprinkler system to all apartments
- 999-year lease
- Secured by design Gold Standard
- 10-year Build Warranty
- 2-year London Square Customer Care Warranty



A HOME FOR
EVERY TASTE
A HOME FOR
EVERY TASTE
A HOME FOR
EVERY TASTE



PLANS

PLANS

SITE PLAN




LONDON SQUARE
BERMONDSEY

THE SUGAR MILL

THE MALTHOUSE

THE GRAINHOUSE

THE MALTHOUSE



THE MALTHOUSE



LEVEL 0

1 BEDROOM

Apartment 1

Living / Dining / Kitchen	6.99 x 3.36	22'11" x 11'0.5"
Bedroom 1	5.09 x 3.02	16'8.5" x 9'11"
Terrace	1.90 x 5.66	6'3" x 18'7"
Internal area	52 sq m	560 sq ft

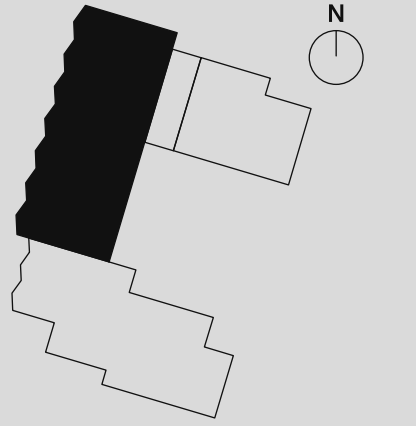
Apartment 2

Living / Dining / Kitchen	6.37 x 4.20	20'10.5" x 13'9.5"
Hall	1.86 x 2.66	6'1" x 8'9"
Bedroom 1	4.45 x 3.56	14'7.5" x 11'8.5"
Terrace	3.00 x 8.01	9'10" x 26'3.5"
Internal area	54 sq m	581 sq ft

2 BEDROOM

Apartment 3

Living / Dining / Kitchen	6.37 x 4.35	20'10.5" x 14'3.5"
Hall	2.05 x 4.30	6'9" x 14'1.5"
Bedroom 1	4.25 x 3.57	13'11" x 11'8.5"
Bedroom 2	4.25 x 2.69	13'11" x 8'10"
Terrace	3.02 x 7.24	9'11" x 23'9"
Internal area	71 sq m	760 sq ft



LEVEL 1

1 BEDROOM

Apartment 5

Living / Dining / Kitchen	6.34 x 4.15	20'9.5" x 13'7.5"
Hall	3.33 x 1.61	10'11" x 5'3.5"
Bedroom 1	3.93 x 3.62	12'11" x 11'10.5"
Balcony	2.59 x 4.71	8'6" x 15'5.5"
Internal area	54 sq m	576 sq ft

Apartment 6

Living / Dining / Kitchen	6.79 x 3.29	22'3.5" x 10'9.5"
Hall	3.51 x 6.27	11'6" x 20'6.5"
Bedroom 1	5.21 x 3.10	17'1" x 10'2"
Balcony	2.25 x 4.15	7'4.5" x 13'7.5"
Internal area	61 sq m	654 sq ft

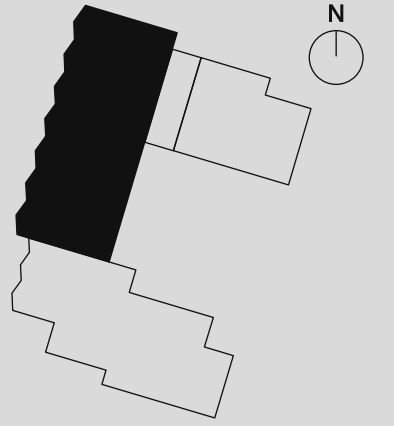
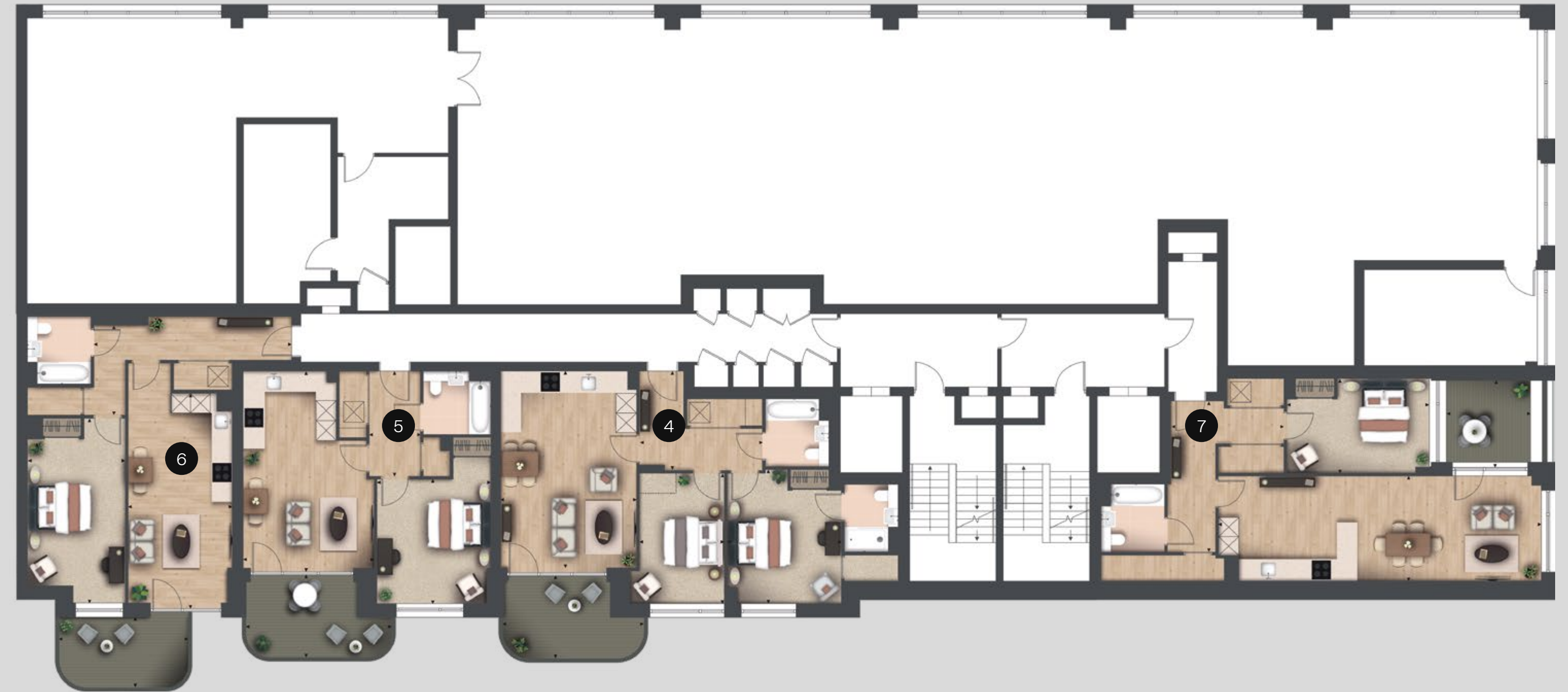
Apartment 7

Living / Dining / Kitchen	3.32 x 9.58	10'11" x 31'5"
Hall	4.78 x 3.59	15'8.5" x 11'9"
Bedroom 1	2.99 x 4.57	9'10" x 15'0"
Balcony	2.79 x 2.89	9'1.5" x 9'6"
Internal area	72 sq m	772 sq ft

2 BEDROOM

Apartment 4

Living / Dining / Kitchen	6.24 x 4.30	20'5.5" x 14'1.5"
Hall	3.12 x 3.90	10'2.5" x 12'9.5"
Bedroom 1	4.25 x 3.61	13'11" x 11'10"
Bedroom 2	4.12 x 2.69	13'6.5" x 8'10"
Balcony	2.58 x 4.53	8'5.5" x 14'10"
Internal area	76 sq m	816 sq ft



LEVEL 2

1 BEDROOM

Apartment 9

Living / Dining / Kitchen	6.34 x 4.15	20'9.5" x 13'7.5"
Hall	3.33 x 1.61	10'11" x 5'3.5"
Bedroom 1	3.93 x 3.62	12'11" x 11'10.5"
Balcony	2.59 x 4.71	8'6" x 15'5.5"
Internal area	54 sq m	576 sq ft

Apartment 15

Living / Dining / Kitchen	3.32 x 9.58	10'11" x 31'5"
Hall	4.78 x 3.59	15'8.5" x 11'9"
Bedroom 1	2.99 x 4.57	9'10" x 15'0"
Balcony	2.79 x 2.89	9'1.5" x 9'6"
Internal area	72 SQ m	772 SQ ft

2 BEDROOM

Apartment 8

Living / Dining / Kitchen	6.37 x 4.30	20'11" x 14'1.5"
Hall	3.13 x 3.90	10'3" x 12'9.5"
Bedroom 1	4.25 x 3.62	13'11" x 11'10.5"
Bedroom 2	4.14 x 2.69	13'7" x 8'10"
Balcony	2.58 x 4.53	8'5.5" x 14'10"
Internal area	75 sq m	805 sq ft

Apartment 11

Living / Dining / Kitchen	3.73 x 7.36	12'3" x 24'1.5"
Hall	3.03 x 2.56	9'11.5" x 8'4.5"
Bedroom 1	2.75 x 5.50	9'0.5" x 18'0.5"
Bedroom 2	3.15 x 3.85	10'4" x 12'7.5"
Balcony	3.03 x 3.25	9'11.5" x 10'8"
Internal area	86 sq m	922 sq ft

2 BEDROOM CONTINUED

Apartment 12

Living / Dining / Kitchen	3.65 x 7.76	12'0" x 25'5.5"
Hall	6.98 x 1.28	22'11" x 4'2.5"
Bedroom 1	3.12 x 4.78	10'3" x 15'8.5"
Bedroom 2	3.05 x 4.05	10'0" x 13'3.5"
Balcony	2.83 x 3.26	9'3.5" x 10'8.5"
Internal area	84 sq m	906 sq ft

Apartment 13

Living / Dining / Kitchen	3.64 x 7.54	11'11.5" x 24'9"
Hall	6.28 x 1.31	20'7" x 4'3.5"
Bedroom 1	2.82 x 5.12	9'3" x 16'9.5"
Bedroom 2	3.31 x 4.05	10'10" x 13'3.5"
Balcony	3.05 x 3.25	10'0" x 10'8"
Internal area	84 sq m	900 sq ft

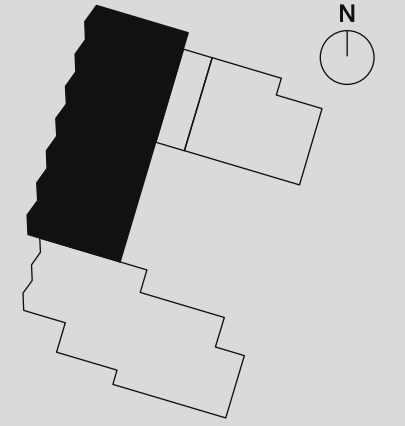
3 BEDROOM

Apartment 10

Living / Dining / Kitchen	10.25 x 3.30	33'7.5" x 10'10"
Hall	3.65 x 6.57	11'11.5" x 21'7"
Bedroom 1	5.95 x 3.07	19'6" x 10'1"
Bedroom 2	5.36 x 3.35	17'7" x 11'0"
Bedroom 3	5.36 x 3.03	17'7" x 9'11.5"
Balcony	3.25 x 2.91	10'8" x 9'6.5"
Internal area	117 sq m	1,257 sq ft

Apartment 14

Living	3.49 x 5.23	11'5.5" x 17'2"
Dining / Kitchen	3.87 x 4.58	12'8.5" x 15'0.5"
Hall	6.63 x 2.59	21'9" x 8'6"
Bedroom 1	3.12 x 4.95	10'3" x 16'3"
Bedroom 2	3.23 x 3.56	10'7" x 11'8.5"
Bedroom 3	4.58 x 2.93	15'0" x 9'7.5"
Balcony	2.83 x 3.26	9'3.5" x 10'8"
Internal area	109 sq m	1,177 sq ft



LEVEL 3

1 BEDROOM

Apartment 17

Living / Dining / Kitchen	6.34 x 4.15	20'9.5" x 13'7.5"
Hall	3.33 x 1.61	10'11" x 5'3.5"
Bedroom 1	3.93 x 3.62	12'11" x 11'10.5"
Balcony	2.59 x 4.71	8'6" x 15'5.5"
Internal area	54 sq m	576 sq ft

Apartment 23

Living / Dining / Kitchen	3.32 x 9.58	10'11" x 31'5"
Hall	4.78 x 3.59	15'8.5" x 11'9"
Bedroom 1	2.99 x 4.57	9'10" x 15'0"
Balcony	2.79 x 2.89	9'1.5" x 9'6"
Internal area	72 SQ m	772 SQ ft

2 BEDROOM

Apartment 16

Living / Dining / Kitchen	6.37 x 4.30	20'11" x 14'1.5"
Hall	3.13 x 3.90	10'3" x 12'9.5"
Bedroom 1	4.25 x 3.62	13'11" x 11'10.5"
Bedroom 2	4.14 x 2.69	13'7" x 8'10"
Balcony	2.58 x 4.53	8'5.5" x 14'10"
Internal area	75 sq m	805 sq ft

Apartment 19

Living / Dining / Kitchen	3.73 x 7.36	12'3" x 24'1.5"
Hall	3.03 x 2.56	9'11.5" x 8'4.5"
Bedroom 1	2.75 x 5.50	9'0.5" x 18'0.5"
Bedroom 2	3.15 x 3.85	10'4" x 12'7.5"
Balcony	3.03 x 3.25	9'11.5" x 10'8"
Internal area	86 sq m	922 sq ft

2 BEDROOM CONTINUED

Apartment 20

Living / Dining / Kitchen	3.65 x 7.76	12'0" x 25'5.5"
Hall	6.98 x 1.28	22'11" x 4'2.5"
Bedroom 1	3.12 x 4.78	10'3" x 15'8.5"
Bedroom 2	3.05 x 4.05	10'0" x 13'3.5"
Balcony	2.83 x 3.26	9'3.5" x 10'8.5"
Internal area	84 sq m	906 sq ft

Apartment 21

Living / Dining / Kitchen	3.64 x 7.54	11'11.5" x 24'9"
Hall	6.28 x 1.31	20'7" x 4'3.5"
Bedroom 1	2.82 x 5.12	9'3" x 16'9.5"
Bedroom 2	3.31 x 4.05	10'10" x 13'3.5"
Balcony	3.05 x 3.25	10'0" x 10'8"
Internal area	84 sq m	900 sq ft

3 BEDROOM

Apartment 18

Living / Dining / Kitchen	10.25 x 3.30	33'7.5" x 10'10"
Hall	3.65 x 6.57	11'11.5" x 21'7"
Bedroom 1	5.95 x 3.07	19'6" x 10'1"
Bedroom 2	5.36 x 3.35	17'7" x 11'0"
Bedroom 3	5.36 x 3.03	17'7" x 9'11.5"
Balcony	3.25 x 2.91	10'8" x 9'6.5"
Internal area	117 sq m	1,257 sq ft

Apartment 22

Living	3.49 x 5.23	11'5.5" x 17'2"
Dining / Kitchen	3.87 x 4.58	12'8.5" x 15'0.5"
Hall	6.63 x 2.59	21'9" x 8'6"
Bedroom 1	3.12 x 4.95	10'3" x 16'3"
Bedroom 2	3.23 x 3.56	10'7" x 11'8.5"
Bedroom 3	4.58 x 2.93	15'0" x 9'7.5"
Balcony	2.83 x 3.26	9'3.5" x 10'8"
Internal area	109 sq m	1,177 sq ft



LEVEL 4

1 BEDROOM

Apartment 25

Living / Dining / Kitchen	6.34 x 4.15	20'9.5" x 13'7.5"
Hall	3.33 x 1.61	10'11" x 5'3.5"
Bedroom 1	3.93 x 3.62	12'11" x 11'10.5"
Balcony	2.59 x 4.71	8'6" x 15'5.5"
Internal area	54 sq m	576 sq ft

Apartment 31

Living / Dining / Kitchen	3.32 x 9.58	10'11" x 31'5"
Hall	4.78 x 3.59	15'8.5" x 11'9"
Bedroom 1	2.99 x 4.57	9'10" x 15'0"
Balcony	2.79 x 2.89	9'1.5" x 9'6"
Internal area	72 SQ m	772 SQ ft

2 BEDROOM

Apartment 24

Living / Dining / Kitchen	6.37 x 4.30	20'11" x 14'1.5"
Hall	3.13 x 3.90	10'3" x 12'9.5"
Bedroom 1	4.25 x 3.62	13'11" x 11'10.5"
Bedroom 2	4.14 x 2.69	13'7" x 8'10"
Balcony	2.58 x 4.53	8'5.5" x 14'10"
Internal area	75 sq m	805 sq ft

Apartment 27

Living / Dining / Kitchen	3.73 x 7.36	12'3" x 24'1.5"
Hall	3.03 x 2.56	9'11.5" x 8'4.5"
Bedroom 1	2.75 x 5.50	9'0.5" x 18'0.5"
Bedroom 2	3.15 x 3.85	10'4" x 12'7.5"
Balcony	3.03 x 3.25	9'11.5" x 10'8"
Internal area	86 sq m	922 sq ft

2 BEDROOM CONTINUED

Apartment 28

Living / Dining / Kitchen	3.65 x 7.76	12'0" x 25'5.5"
Hall	6.98 x 1.28	22'11" x 4'2.5"
Bedroom 1	3.12 x 4.78	10'3" x 15'8.5"
Bedroom 2	3.05 x 4.05	10'0" x 13'3.5"
Balcony	2.83 x 3.26	9'3.5" x 10'8.5"
Internal area	84 sq m	906 sq ft

Apartment 29

Living / Dining / Kitchen	3.64 x 7.54	11'11.5" x 24'9"
Hall	6.28 x 1.31	20'7" x 4'3.5"
Bedroom 1	2.82 x 5.12	9'3" x 16'9.5"
Bedroom 2	3.31 x 4.05	10'10" x 13'3.5"
Balcony	3.05 x 3.25	10'0" x 10'8"
Internal area	84 sq m	900 sq ft

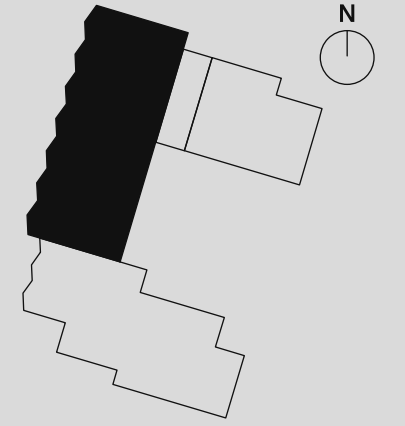
3 BEDROOM

Apartment 26

Living / Dining / Kitchen	10.25 x 3.30	33'7.5" x 10'10"
Hall	3.65 x 6.57	11'11.5" x 21'7"
Bedroom 1	5.95 x 3.07	19'6" x 10'1"
Bedroom 2	5.36 x 3.35	17'7" x 11'0"
Bedroom 3	5.36 x 3.03	17'7" x 9'11.5"
Balcony	3.25 x 2.91	10'8" x 9'6.5"
Internal area	117 sq m	1,257 sq ft

Apartment 30

Living	3.49 x 5.23	11'5.5" x 17'2"
Dining / Kitchen	3.87 x 4.58	12'8.5" x 15'0.5"
Hall	6.63 x 2.59	21'9" x 8'6"
Bedroom 1	3.12 x 4.95	10'3" x 16'3"
Bedroom 2	3.23 x 3.56	10'7" x 11'8.5"
Bedroom 3	4.58 x 2.93	15'0" x 9'7.5"
Balcony	2.83 x 3.26	9'3.5" x 10'8"
Internal area	109 sq m	1,177 sq ft



LEVEL 5

1 BEDROOM

Apartment 33

Living / Dining / Kitchen	6.34 x 4.15	20'9.5" x 13'7.5"
Hall	3.33 x 1.61	10'11" x 5'3.5"
Bedroom 1	3.93 x 3.62	12'11" x 11'10.5"
Balcony	2.59 x 4.71	8'6" x 15'5.5"
Internal area	54 sq m	576 sq ft

Apartment 39

Living / Dining / Kitchen	3.32 x 9.58	10'11" x 31'5"
Hall	4.78 x 3.59	15'8.5" x 11'9"
Bedroom 1	2.99 x 4.57	9'10" x 15'0"
Balcony	2.79 x 2.89	9'1.5" x 9'6"
Internal area	72 SQ m	772 SQ ft

2 BEDROOM

Apartment 32

Living / Dining / Kitchen	6.37 x 4.30	20'11" x 14'1.5"
Hall	3.13 x 3.90	10'3" x 12'9.5"
Bedroom 1	4.25 x 3.62	13'11" x 11'10.5"
Bedroom 2	4.14 x 2.69	13'7" x 8'10"
Balcony	2.58 x 4.53	8'5.5" x 14'10"
Internal area	75 sq m	805 sq ft

Apartment 35

Living / Dining / Kitchen	3.73 x 7.36	12'3" x 24'1.5"
Hall	3.03 x 2.56	9'11.5" x 8'4.5"
Bedroom 1	2.75 x 5.50	9'0.5" x 18'0.5"
Bedroom 2	3.15 x 3.85	10'4" x 12'7.5"
Balcony	3.03 x 3.25	9'11.5" x 10'8"
Internal area	86 sq m	922 sq ft

2 BEDROOM CONTINUED

Apartment 36

Living / Dining / Kitchen	3.65 x 7.76	12'0" x 25'5.5"
Hall	6.98 x 1.28	22'11" x 4'2.5"
Bedroom 1	3.12 x 4.78	10'3" x 15'8.5"
Bedroom 2	3.05 x 4.05	10'0" x 13'3.5"
Balcony	2.83 x 3.26	9'3.5" x 10'8.5"
Internal area	84 sq m	906 sq ft

Apartment 37

Living / Dining / Kitchen	3.64 x 7.54	11'11.5" x 24'9"
Hall	6.28 x 1.31	20'7" x 4'3.5"
Bedroom 1	2.82 x 5.12	9'3" x 16'9.5"
Bedroom 2	3.31 x 4.05	10'10" x 13'3.5"
Balcony	3.05 x 3.25	10'0" x 10'8"
Internal area	84 sq m	900 sq ft

3 BEDROOM

Apartment 34

Living / Dining / Kitchen	10.25 x 3.30	33'7.5" x 10'10"
Hall	3.65 x 6.57	11'11.5" x 21'7"
Bedroom 1	5.95 x 3.07	19'6" x 10'1"
Bedroom 2	5.36 x 3.35	17'7" x 11'0"
Bedroom 3	5.36 x 3.03	17'7" x 9'11.5"
Balcony	3.25 x 2.91	10'8" x 9'6.5"
Internal area	117 sq m	1,257 sq ft

Apartment 38

Living	3.49 x 5.23	11'5.5" x 17'2"
Dining / Kitchen	3.87 x 4.58	12'8.5" x 15'0.5"
Hall	6.63 x 2.59	21'9" x 8'6"
Bedroom 1	3.12 x 4.95	10'3" x 16'3"
Bedroom 2	3.23 x 3.56	10'7" x 11'8.5"
Bedroom 3	4.58 x 2.93	15'0" x 9'7.5"
Balcony	2.83 x 3.26	9'3.5" x 10'8"
Internal area	109 sq m	1,177 sq ft



LEVEL 6

1 BEDROOM

Apartment 41

Living / Dining / Kitchen	6.34 x 4.15	20'9.5" x 13'7.5"
Hall	3.33 x 1.61	10'11" x 5'3.5"
Bedroom 1	3.93 x 3.62	12'11" x 11'10.5"
Balcony	2.59 x 4.71	8'6" x 15'5.5"
Internal area	54 sq m	576 sq ft

Apartment 47

Living / Dining / Kitchen	3.32 x 9.58	10'11" x 31'5"
Hall	4.78 x 3.59	15'8.5" x 11'9"
Bedroom 1	2.99 x 4.57	9'10" x 15'0"
Balcony	2.79 x 2.89	9'1.5" x 9'6"
Internal area	72 SQ m	772 SQ ft

2 BEDROOM

Apartment 40

Living / Dining / Kitchen	6.37 x 4.30	20'11" x 14'1.5"
Hall	3.13 x 3.90	10'3" x 12'9.5"
Bedroom 1	4.25 x 3.62	13'11" x 11'10.5"
Bedroom 2	4.14 x 2.69	13'7" x 8'10"
Balcony	2.58 x 4.53	8'5.5" x 14'10"
Internal area	75 sq m	805 sq ft

Apartment 43

Living / Dining / Kitchen	3.73 x 7.36	12'3" x 24'1.5"
Hall	3.03 x 2.56	9'11.5" x 8'4.5"
Bedroom 1	2.75 x 5.50	9'0.5" x 18'0.5"
Bedroom 2	3.15 x 3.85	10'4" x 12'7.5"
Balcony	3.03 x 3.25	9'11.5" x 10'8"
Internal area	86 sq m	922 sq ft

2 BEDROOM CONTINUED

Apartment 44

Living / Dining / Kitchen	3.65 x 7.76	12'0" x 25'5.5"
Hall	6.98 x 1.28	22'11" x 4'2.5"
Bedroom 1	3.12 x 4.78	10'3" x 15'8.5"
Bedroom 2	3.05 x 4.05	10'0" x 13'3.5"
Balcony	2.83 x 3.26	9'3.5" x 10'8.5"
Internal area	84 sq m	906 sq ft

Apartment 45

Living / Dining / Kitchen	3.64 x 7.54	11'11.5" x 24'9"
Hall	6.28 x 1.31	20'7" x 4'3.5"
Bedroom 1	2.82 x 5.12	9'3" x 16'9.5"
Bedroom 2	3.31 x 4.05	10'10" x 13'3.5"
Balcony	3.05 x 3.25	10'0" x 10'8"
Internal area	84 sq m	900 sq ft

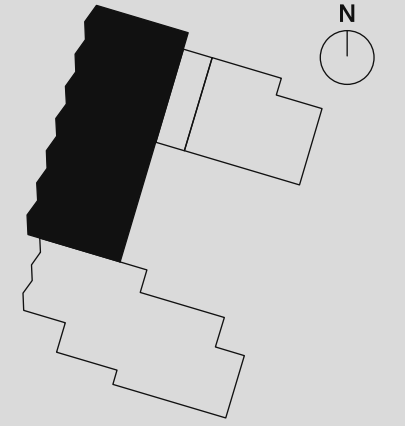
3 BEDROOM

Apartment 42

Living / Dining / Kitchen	10.25 x 3.30	33'7.5" x 10'10"
Hall	3.65 x 6.57	11'11.5" x 21'7"
Bedroom 1	5.95 x 3.07	19'6" x 10'1"
Bedroom 2	5.36 x 3.35	17'7" x 11'0"
Bedroom 3	5.36 x 3.03	17'7" x 9'11.5"
Balcony	3.25 x 2.91	10'8" x 9'6.5"
Internal area	117 sq m	1,257 sq ft

Apartment 46

Living	3.49 x 5.23	11'5.5" x 17'2"
Dining / Kitchen	3.87 x 4.58	12'8.5" x 15'0.5"
Hall	6.63 x 2.59	21'9" x 8'6"
Bedroom 1	3.12 x 4.95	10'3" x 16'3"
Bedroom 2	3.23 x 3.56	10'7" x 11'8.5"
Bedroom 3	4.58 x 2.93	15'0" x 9'7.5"
Balcony	2.83 x 3.26	9'3.5" x 10'8"
Internal area	109 sq m	1,177 sq ft



LEVEL 7

1 BEDROOM

Apartment 49

Living / Dining / Kitchen	6.34 x 4.15	20'9.5" x 13'7.5"
Hall	3.33 x 1.61	10'11" x 5'3.5"
Bedroom 1	3.93 x 3.62	12'11" x 11'10.5"
Balcony	2.59 x 4.71	8'6" x 15'5.5"
Internal area	54 sq m	576 sq ft

Apartment 55

Living / Dining / Kitchen	3.32 x 9.58	10'11" x 31'5"
Hall	4.78 x 3.59	15'8.5" x 11'9"
Bedroom 1	2.99 x 4.57	9'10" x 15'0"
Balcony	2.79 x 2.89	9'1.5" x 9'6"
Internal area	72 SQ m	772 SQ ft

2 BEDROOM

Apartment 48

Living / Dining / Kitchen	6.37 x 4.30	20'11" x 14'1.5"
Hall	3.13 x 3.90	10'3" x 12'9.5"
Bedroom 1	4.25 x 3.62	13'11" x 11'10.5"
Bedroom 2	4.14 x 2.69	13'7" x 8'10"
Balcony	2.58 x 4.53	8'5.5" x 14'10"
Internal area	75 sq m	805 sq ft

Apartment 51

Living / Dining / Kitchen	3.73 x 7.36	12'3" x 24'1.5"
Hall	3.03 x 2.56	9'11.5" x 8'4.5"
Bedroom 1	2.75 x 5.50	9'0.5" x 18'0.5"
Bedroom 2	3.15 x 3.85	10'4" x 12'7.5"
Balcony	3.03 x 3.25	9'11.5" x 10'8"
Internal area	86 sq m	922 sq ft

2 BEDROOM CONTINUED

Apartment 52

Living / Dining / Kitchen	3.65 x 7.76	12'0" x 25'5.5"
Hall	6.98 x 1.28	22'11" x 4'2.5"
Bedroom 1	3.12 x 4.78	10'3" x 15'8.5"
Bedroom 2	3.05 x 4.05	10'0" x 13'3.5"
Balcony	2.83 x 3.26	9'3.5" x 10'8.5"
Internal area	84 sq m	906 sq ft

Apartment 53

Living / Dining / Kitchen	3.64 x 7.54	11'11.5" x 24'9"
Hall	6.28 x 1.31	20'7" x 4'3.5"
Bedroom 1	2.82 x 5.12	9'3" x 16'9.5"
Bedroom 2	3.31 x 4.05	10'10" x 13'3.5"
Balcony	3.05 x 3.25	10'0" x 10'8"
Internal area	84 sq m	900 sq ft

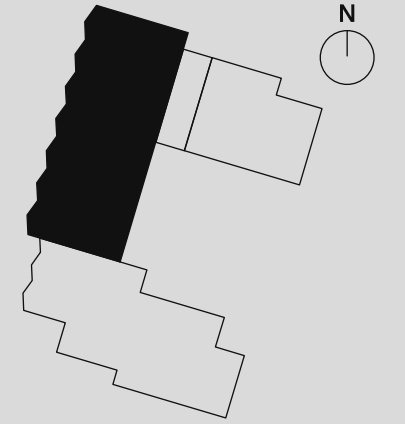
3 BEDROOM

Apartment 50

Living / Dining / Kitchen	10.25 x 3.30	33'7.5" x 10'10"
Hall	3.65 x 6.57	11'11.5" x 21'7"
Bedroom 1	5.95 x 3.07	19'6" x 10'1"
Bedroom 2	5.36 x 3.35	17'7" x 11'0"
Bedroom 3	5.36 x 3.03	17'7" x 9'11.5"
Balcony	3.25 x 2.91	10'8" x 9'6.5"
Internal area	117 sq m	1,257 sq ft

Apartment 54

Living	3.49 x 5.23	11'5.5" x 17'2"
Dining / Kitchen	3.87 x 4.58	12'8.5" x 15'0.5"
Hall	6.63 x 2.59	21'9" x 8'6"
Bedroom 1	3.12 x 4.95	10'3" x 16'3"
Bedroom 2	3.23 x 3.56	10'7" x 11'8.5"
Bedroom 3	4.58 x 2.93	15'0" x 9'7.5"
Balcony	2.83 x 3.26	9'3.5" x 10'8"
Internal area	109 sq m	1,177 sq ft



CREATING PLACES

TO THRIVE

CREATING PLACES

TO THRIVE

CREATING PLACES

TO THRIVE



DEVELOPER

DEVELOPER

A DEVELOPER YOU CAN TRUST

Founded in 2010, London Square is an award-winning property company with a development pipeline worth over £2.6 billion. By focusing on London and its surrounding areas, we have become specialists in developing homes that reflect the capital at its best – creating authentic, modern neighbourhoods for people of all ages.



BENEFITS OF BUYING NEW

New-build properties come with a promise – you can move straight in and immediately relax. So, no stress or costly renovations to worry about.

10-YEAR WARRANTY

Your home carries the reassurance of a 10-year warranty.

AWARD-WINNING CUSTOMER SERVICE

Our dedicated sales and customer care teams will guide you through every step of your purchase.

SECURITY AND PEACE OF MIND

You can be assured that your new home will meet our very high standards in every aspect of the build and finish.

HIGH QUALITY BUILD

Quality is built into the very fabric of our homes, so you can buy with complete confidence.

COMMUNITY AND HERITAGE

We create sustainable communities where people thrive.

MANAGEMENT COMPANY CHARTER

Our mission is to make a difference to people's lives which continues once residents have moved in.

ENERGY EFFICIENT

Your new home complies with all the building regulations for sustainability, insulation and energy efficiency.

2-YEAR CUSTOMER CARE

Your home carries a 2-year defect period managed by the London Square Customer Care Team.

CONSIDERED LIVING

At London Square our vision is to bring sustainable living to the capital
– creating places and communities where people really want to live.

SOCIAL

We focus our efforts on building sustainable communities as they are at the heart of who we are and what we do. We are proud to be a Living Wage Employer and accredited with the Greater London Authority's good work standard.

GOVERNANCE

We are committed to increasing diversity at all levels of our organisation, including our Executive Board. However, the board is supported by a strong team, with a higher than industry-average representation of female and BAME employees.

CARBON

We will work to build net zero carbon homes by 2030, decreasing our greenhouse gas emissions year on year.

WASTE

We will continually strive to reduce, re-use and recycle, recycling a minimum of 98% of our construction waste.

EMPLOYMENT

We will remain an outstanding employer that people want to work for.

ENVIRONMENT

We continue to innovate in order to secure a sustainable future for all. We focus heavily on ways we can reduce our impact on climate change and the pressures put on the earth, nature and our precious resources.

INCLUSION

We will continue to be an inclusive employer of choice and create developments that foster inclusion in the community. We will keep building sustainable communities where people can live, work, learn and play.

CORPORATE GOVERNANCE

We will continue to be well governed and do business in a clear and transparent manner. We will continue treating our suppliers and customers fairly.

NATURAL RESOURCES

We will continue to source materials with the least environmental impact, reduce water consumption and increase biodiversity.

REPORTING

We will continue to pay fair taxes.





© 2026 London Square
One York Road
Uxbridge, UB8 1RN
01895 627 300

IG/FB: @londonsquaredevelopments
londonsquare.co.uk