

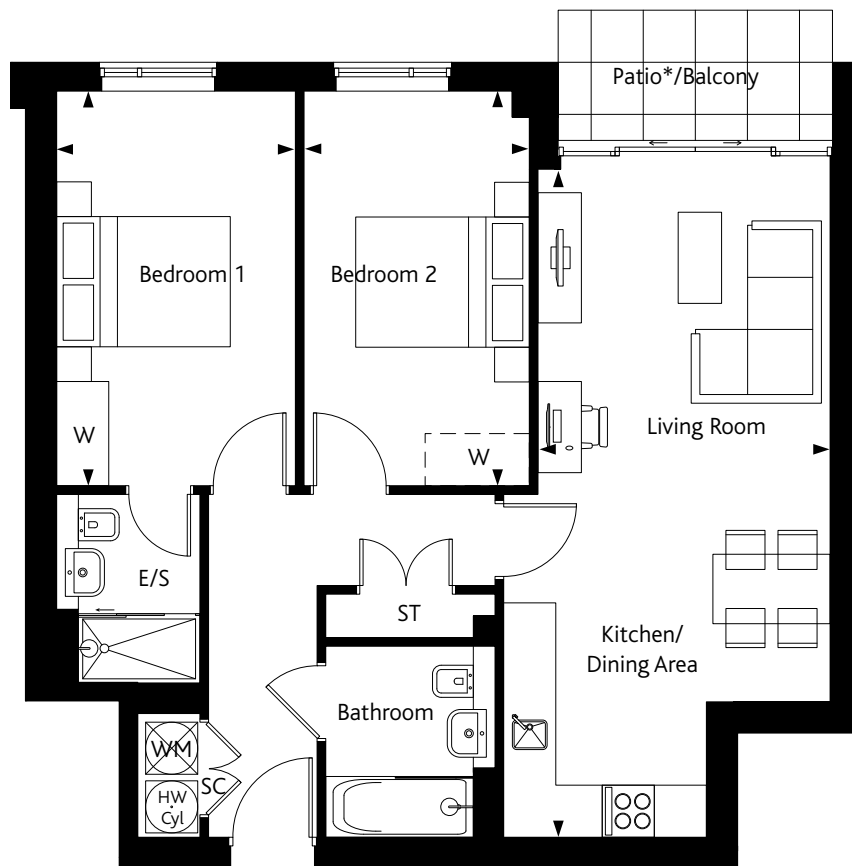


WATFORD

WD24

THE TRAFALGAR

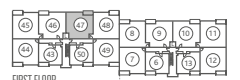
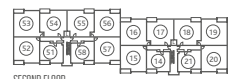
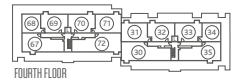
2 BEDROOM APARTMENT
Plot 47



Kitchen/Living/Dining Room	7.65m x 3.32m	25'1" x 10'11"
Bedroom 1	4.50m x 2.70m	14'9" x 8'10"
Bedroom 2	4.50m x 2.50m	14'9" x 8'2"

* Handed Plots
ST = Store
TD = Tumble Dryer
RL = Roof Light
SC = Service Cupboard
RS = Refuse storage

W = Included Wardrobe
W = Optional Wardrobe ---
WM = Washing Machine
HW Cyl = Hot Water Cylinder
CS = Cycle Store



Floorplans are not to scale, dimensions may vary between plots and kitchen layouts are indicative only. Please speak to your Sales Advisor for details.

➤ **YOUR CLOSEST BUS STOP IS A 1 MINUTE WALK THAT CAN TAKE YOU TO WATFORD TOWN CENTRE IN 19 MINUTES.**

