

THE BELGRAVE

THREE BEDROOM APARTMENT

LEVEL 1-6

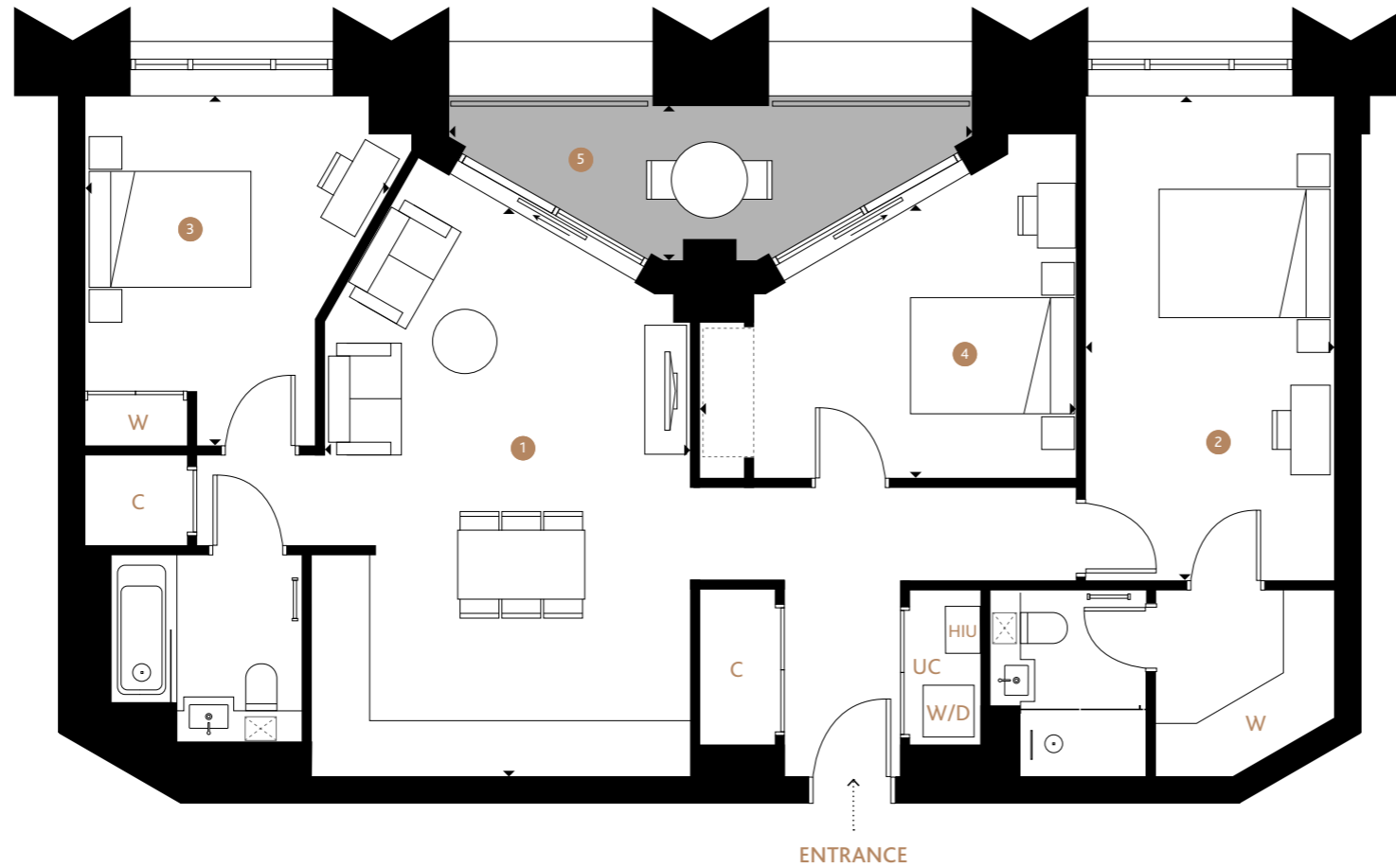
Apartments: 101-601

Level 7-8

Apartments: 701-801

LEVEL 22

Apartments: 2201 & 2205



1 KITCHEN/LIVING/DINING

6.50m x 4.21m | 21'4" x 13'10"

4 BEDROOM 3

3.10m x 4.36m | 10'2" x 14'4"

2 BEDROOM 1

5.53m x 2.88m | 18'2" x 9'5"

5 BALCONY

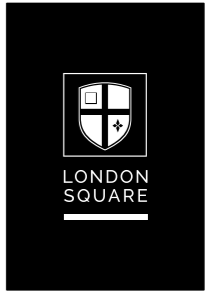
1.59m x 6.04m | 5'3" x 19'10"

3 BEDROOM 2

3.98m x 3.40m | 13'1" x 11'2"

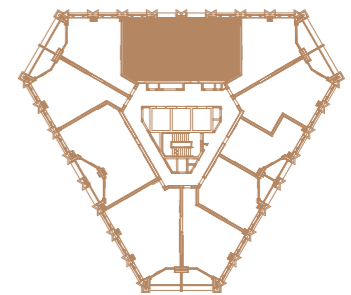
HIU - Heat interface unit | C - Cupboard | ☒ - Cabinet | ◻ - Wardrobe space

UC - Utility cupboard | W - Wardrobe | W/D - Washer/Dryer

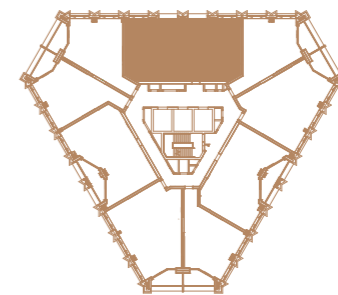


NINE ELMS

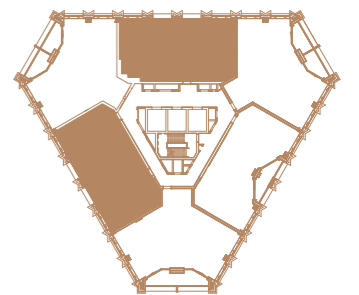
SW11



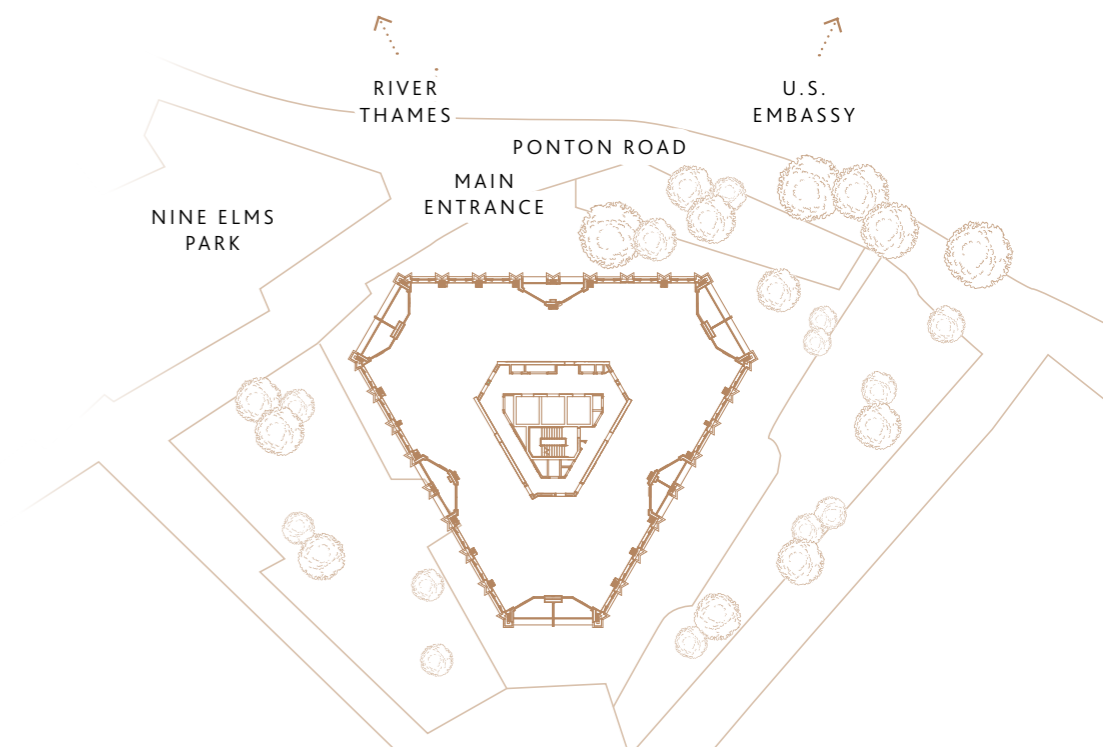
FLOOR 1-6



FLOOR 7-8



FLOOR 22



Position may vary on floor 7-8 and 22.

Map is not to scale. Subject to change.