

THE EGERTON

TWO BEDROOM APARTMENT

LEVEL 1-6

Apartments: 107-607

LEVEL 7-8

Apartments: 703-803 & 706-806

LEVEL 9-19

Apartments: 904-1904, 905-1905
& 908-1908

LEVEL 20-21

Apartments: 2006-2106
& 2007-2107



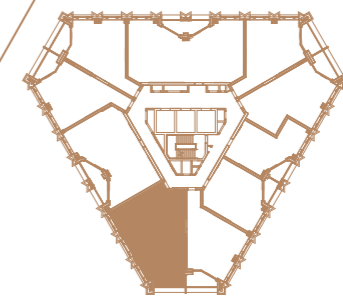
- 1 **KITCHEN/DINING**
3.19m x 5.99m | 10'6" x 19'8"
- 2 **LIVING**
3.41m x 3.37m | 11'2" x 11'1"
- 3 **BEDROOM 1**
4.34m x 3.49m | 14'3" x 11'5"

- 4 **BEDROOM 2**
4.34m x 2.82m | 14'3" x 9'3"
- 5 **BALCONY**
1.63m x 3.89m | 5'4" x 12'9"

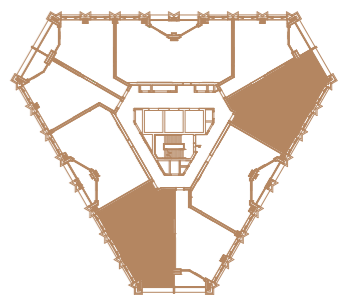
HIU - Heat interface unit | C - Cupboard | ☒ - Cabinet | □ - Wardrobe space
UC - Utility cupboard | W - Wardrobe | W/D - Washer/Dryer



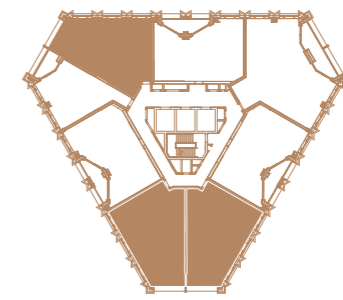
NINE ELMS
SW11



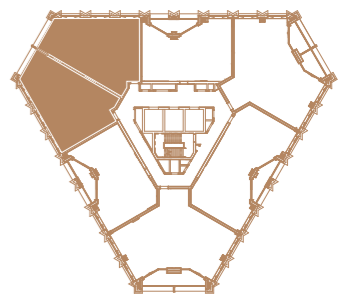
FLOOR 1-6



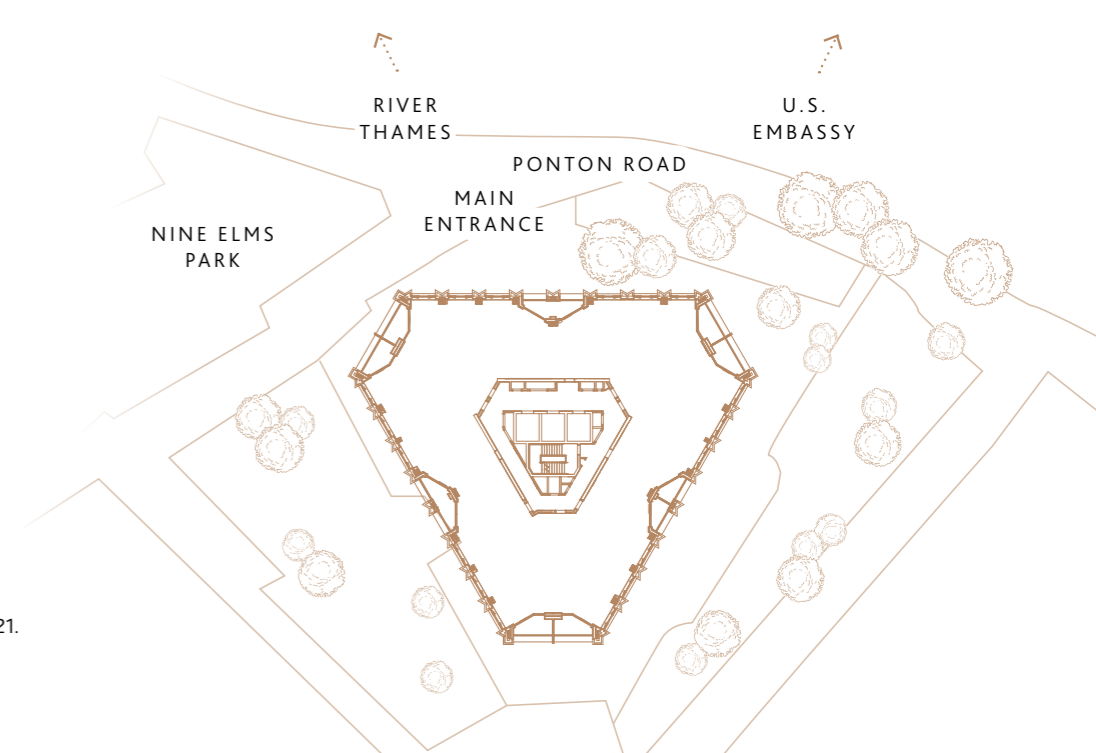
FLOOR 7-8



FLOOR 9-19



FLOOR 20-21



Position may vary on floor 7-8, 9-19 and 20-21.
Map is not to scale. Subject to change.