

# THE SLOANE

THREE BEDROOM APARTMENT

LEVEL 9-19  
Apartments: 902-1902

LEVEL 20-21  
Apartments: 2002-2102  
& 2004-2104



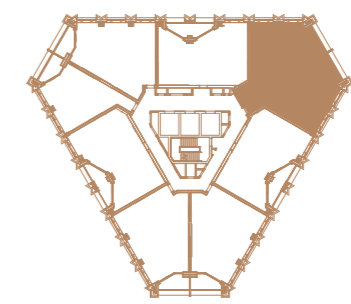
- 1 KITCHEN/DINING  
6.43m x 3.58m | 21'1" x 11'9"
- 2 LIVING  
3.36m x 2.96m | 11'0" x 9'9"
- 3 BEDROOM 1  
3.36m x 2.80m | 11'0" x 9'2"
- 4 DRESSER/STUDY  
2.20m x 2.29m | 7'3" x 7'6"

- 5 BEDROOM 2  
4.15m x 3.10m | 13'7" x 10'2"
- 6 BEDROOM 3  
3.20m x 4.05m | 10'6" x 13'3"
- 7 BALCONY  
1.63m x 7.92m | 5'4" x 26'0"

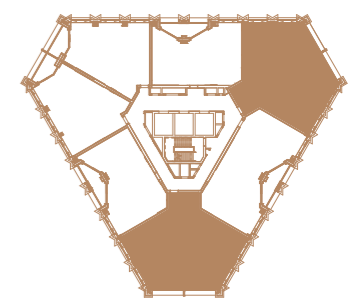
HIU - Heat interface unit | C - Cupboard | ☒ - Cabinet | ☐ - Wardrobe space  
UC - Utility cupboard W - Wardrobe | W/D - Washer/Dryer



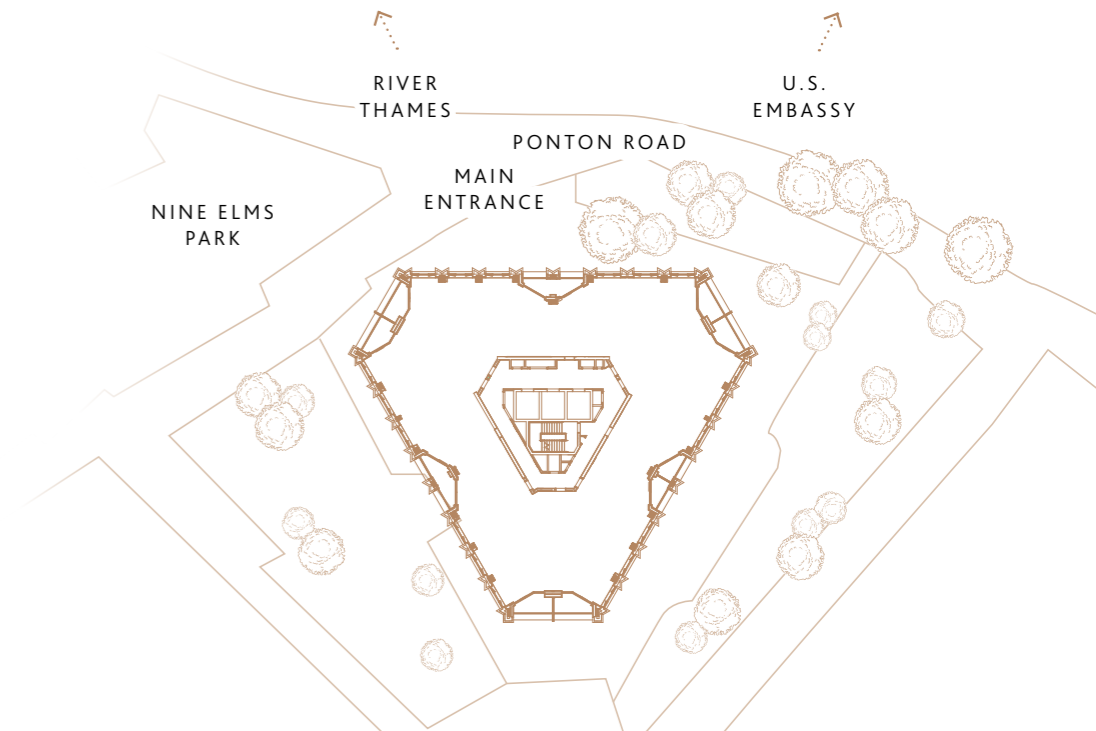
NINE ELMS  
SW11



FLOOR 9-19



FLOOR 20-21



Position may vary on floor 20-21.  
Map is not to scale. Subject to change.